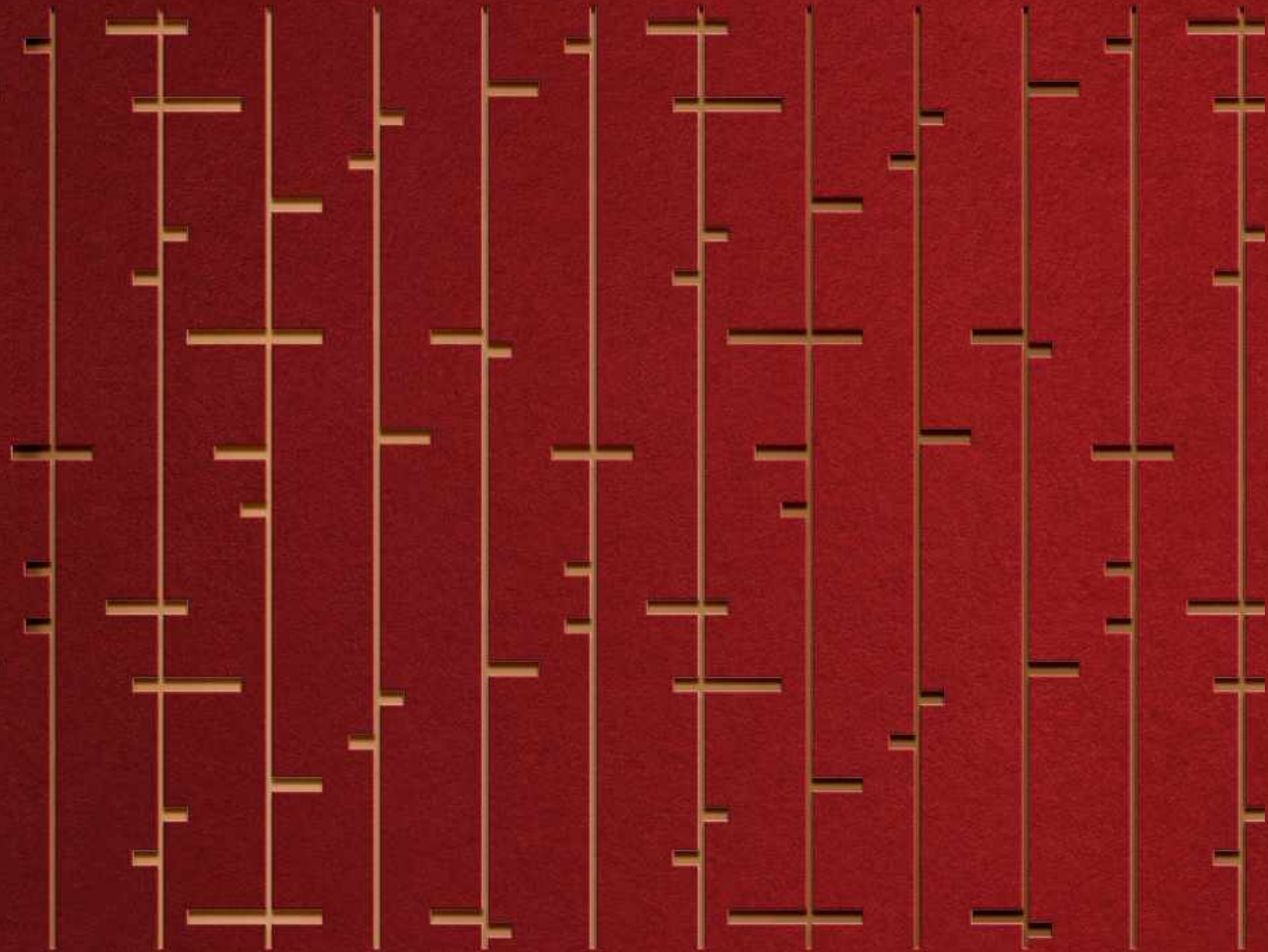


# ASPEN

CANARY WHARF



Exceptional and  
exquisite apartment  
living amidst a vibrant  
and cosmopolitan  
new community with  
astounding views.

---

Tall and elegant, Aspen  
at Consort Place defines  
its district's skyline.

---

ASPEN



The remarkable homes in Aspen Canary Wharf, enjoy astonishing views across the Capital and sit within the neighbourhood's new destination, Consort Place.

THESE STUNNING HOMES WITH A WEALTH OF RESIDENT AMENITIES TOWER ABOVE THIS NEWLY LANDSCAPED DESTINATION WITH ITS HOTEL, CAFÉS, SHOPS, COMMUNITY CENTRE, HEALTH, EDUCATION AND A CHARMING VICTORIAN PUBLIC HOUSE. WITH STUDIO, ONE, TWO AND THREE-BEDROOM APARTMENTS AVAILABLE, ASPEN IS MORE THAN JUST A HOME. IT'S A LIFESTYLE.

## THE VISION

Nestling in Canary Wharf and alongside the glittering Thames, Aspen is poised to be one of the tallest and most striking residences in the Capital.

---

This distinctive addition to the London skyline makes not only a stunning architectural statement but also brings a new community to the area.

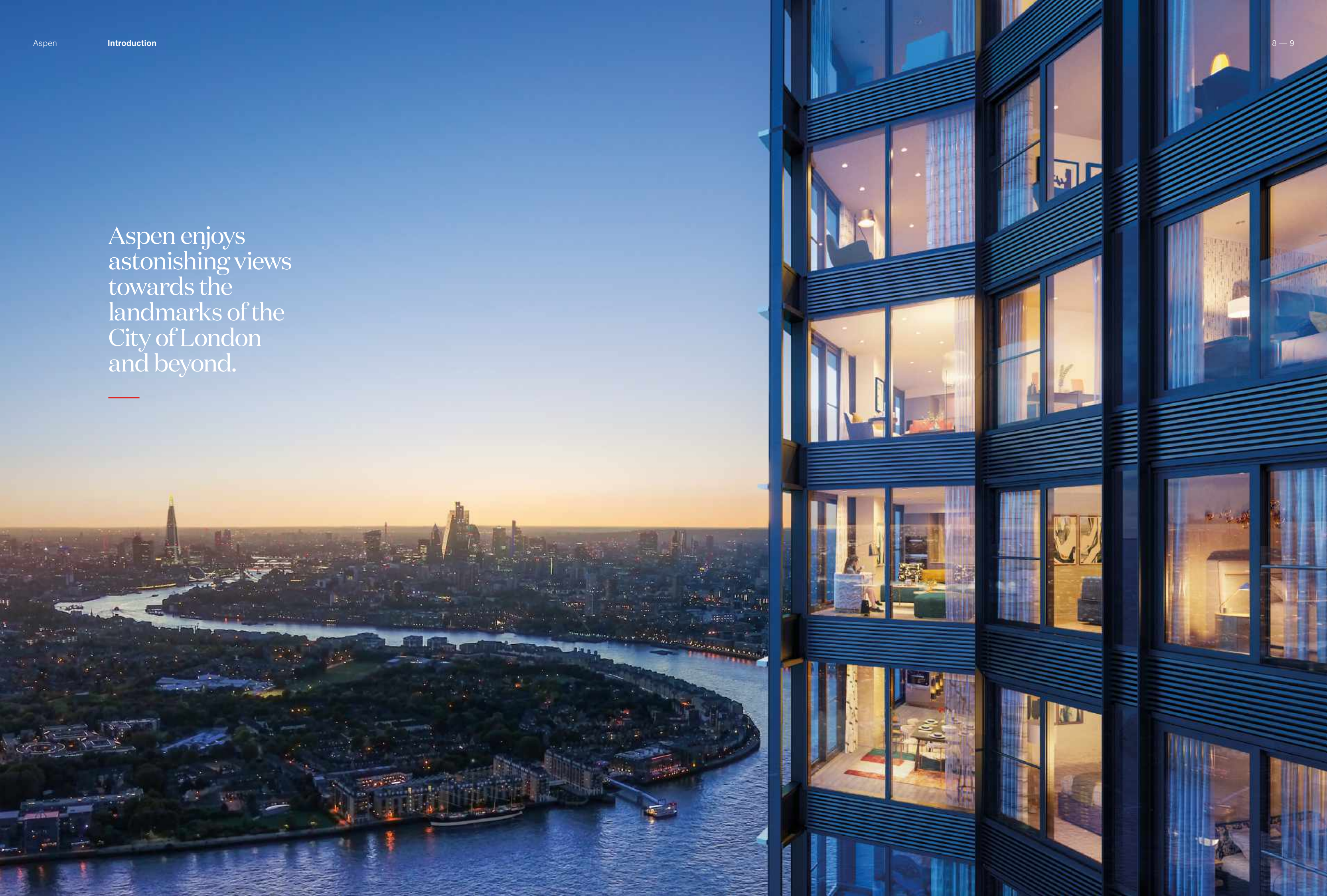
Aspen is the jewel in the crown of Consort Place, a fresh destination with cafés, bars, activity spaces, education, health centre, restaurant and the international Dorsett hotel.

The residences are the cornerstone of a vibrant pocket neighbourhood, that will be somewhere to meet, relax, work, study or just enjoy throughout the year and at any time of day.



Aspen enjoys  
astonishing views  
towards the  
landmarks of the  
City of London  
and beyond.

---



01/

*Canary Wharf*  
**THE LOCATION**



Aspirational.  
International.  
Exceptional.

---

01/

# THE LOCATION

Canary Wharf

Aspirational.  
International.  
Exceptional.

---

---

## WHY ISLE OF DOGS?

Canary Wharf is located on the Isle of Dogs. The origin of this name is a constant source of debate.

There are numerous theories, including it being a reference to Dutch engineers who drained the area in the 1600s, the doggers type of fishing boat, or merely a corruption of the *Isle of Ducks*, or *Dykes*.

A theory since Strype Stow's Survey in 1720, the common explanation was that Henry VIII kept his hunting dogs in the area.

Given the King's Palace was opposite in Greenwich at the time, this is not altogether fanciful. However, historians tend to debunk this provenance for numerous reasons and consequently, the reason remains a mystery.

---





## LOCATION

### A cosmopolitan neighbourhood; where live, work and play seamlessly combine.

International Canary Wharf is the third largest shopping centre in London. It is a treasure trove of small boutiques, designer labels and much-loved brands. Whether in search of a tailor-made suit or that must-have handbag, you'll find over 120 stores across five vibrant malls.

There are a wide variety of restaurants, bars and cafés to suit every taste and time of day, alongside numerous parks, squares and waterside walks adorned with a remarkable display of public sculpture.

Within easy reach of many of London's best-known landmarks and popular spots, Aspen at Consort Place is a mere 11 minutes walk from Canary Wharf underground station (Jubilee Line), or 6 minutes away from Heron Quays and South Quay DLR (Docklands Light Railway) stations. Connections are further enriched by the Thames Clippers river boat services to London's landmark destinations such as Greenwich, Tower Bridge, Tate Modern, Westminster and Blackfriars.

The new Elizabeth Line (better known as Crossrail) station is less than 15 minutes from Consort Place and will link to Bond Street in only 13 minutes.



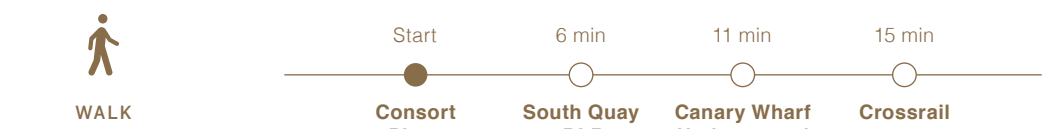
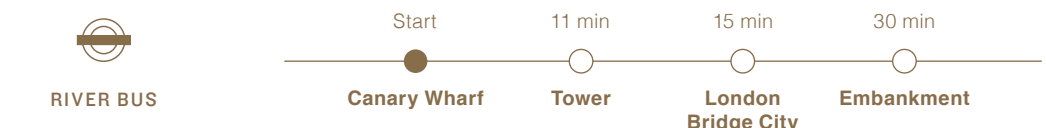
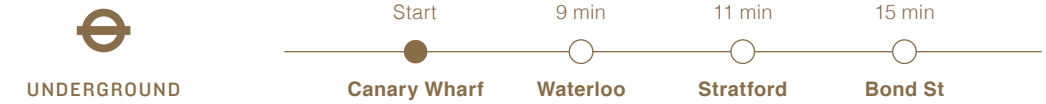
Close to every type of transport the capital has to offer.



TRANSPORT

Travel made easy.

# Trains, Planes & River Buses

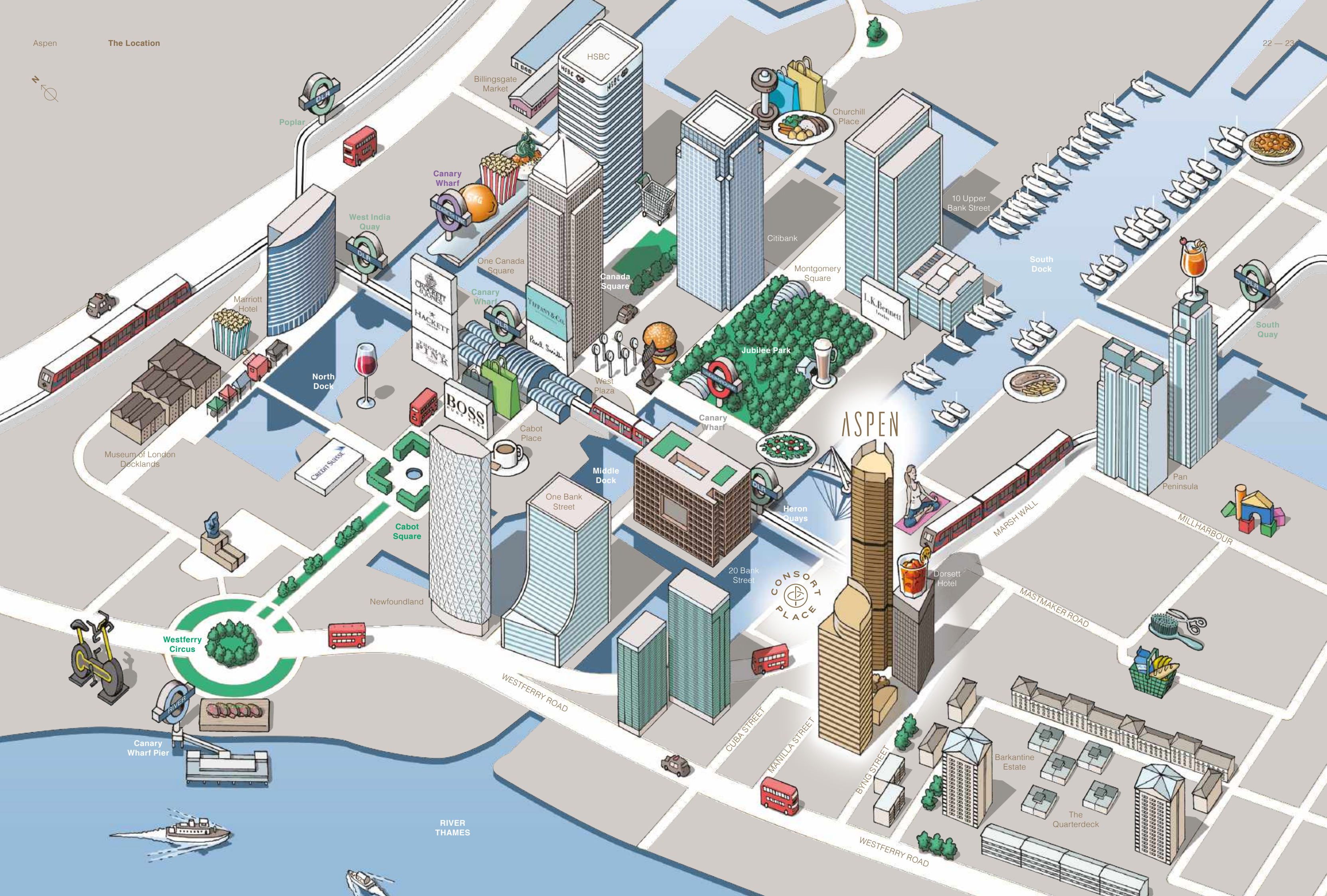


All travel times starting from nearest relevant station to 50 Marsh Wall, E14 9TP, and using fastest available route on public transport. Source: TFL Journey Planner and Crossrail.



Canary Wharf  
has some of the  
finest shops,  
bars, restaurants  
and open spaces  
in London.





Poplar

West India Quay

Canary Wharf

Billingsgate Market

HSBC

Churchill Place

10 Upper Bank Street

South Dock

South Quay

Marriott Hotel

North Dock

One Canada Square

Canada Square

Citibank

Montgomery Square

Jubilee Park

West Plaza

BOSS

Cabot Place

Middle Dock

20 Bank Street

CONSORT PLACE

ASPEN

Heron Quays

Dorset Hotel

Pan Peninsula

MARSH WALL

MILLHARBOUR

Cabot Square

Newfoundland

Westferry Circus

WESTFERRY ROAD

CUBA STREET

MANILLA STREET

BYNG STREET

WESTFERRY ROAD

MASTMAKER ROAD

Barkantine Estate

The Quarterdeck

RIVER THAMES

Canary Wharf Pier



**RESTAURANTS AND ROOFTOPS**  
 Boutique food trucks & pop-up markets, like Kerb on the Quay (pictured left), to rooftops including Bókan Restaurant & Bar (pictured right) will satisfy any palette.

## Exquisite restaurants, bars and cafés.

---

WHATEVER YOUR CULINARY TASTES, THERE'S NO SHORTAGE OF RESTAURANTS IN CANARY WHARF AND PLENTY OF ALFRESCO TERRACES TO TEMPT YOU OUTSIDE ON A SUMMER'S DAY.



# Best of retail therapy.



**STYLE IS THE WATCHWORD AT THE NEARBY CANARY WHARF RETAIL DISTRICT, WITH AN IMPRESSIVE ARRAY OF BRANDS AND BOUTIQUES.**

### SHOPPING CENTRE

The shopping centres at Canary Wharf are a goldmine of brands, including Massimo Dutti, Mulberry, Paul Smith, Thomas Pink, Zara, The White Company, Waitrose, Waterstones, Montblanc and Tiffany & Co. (Image credit: Watchfinder & Co., Cabot Square)

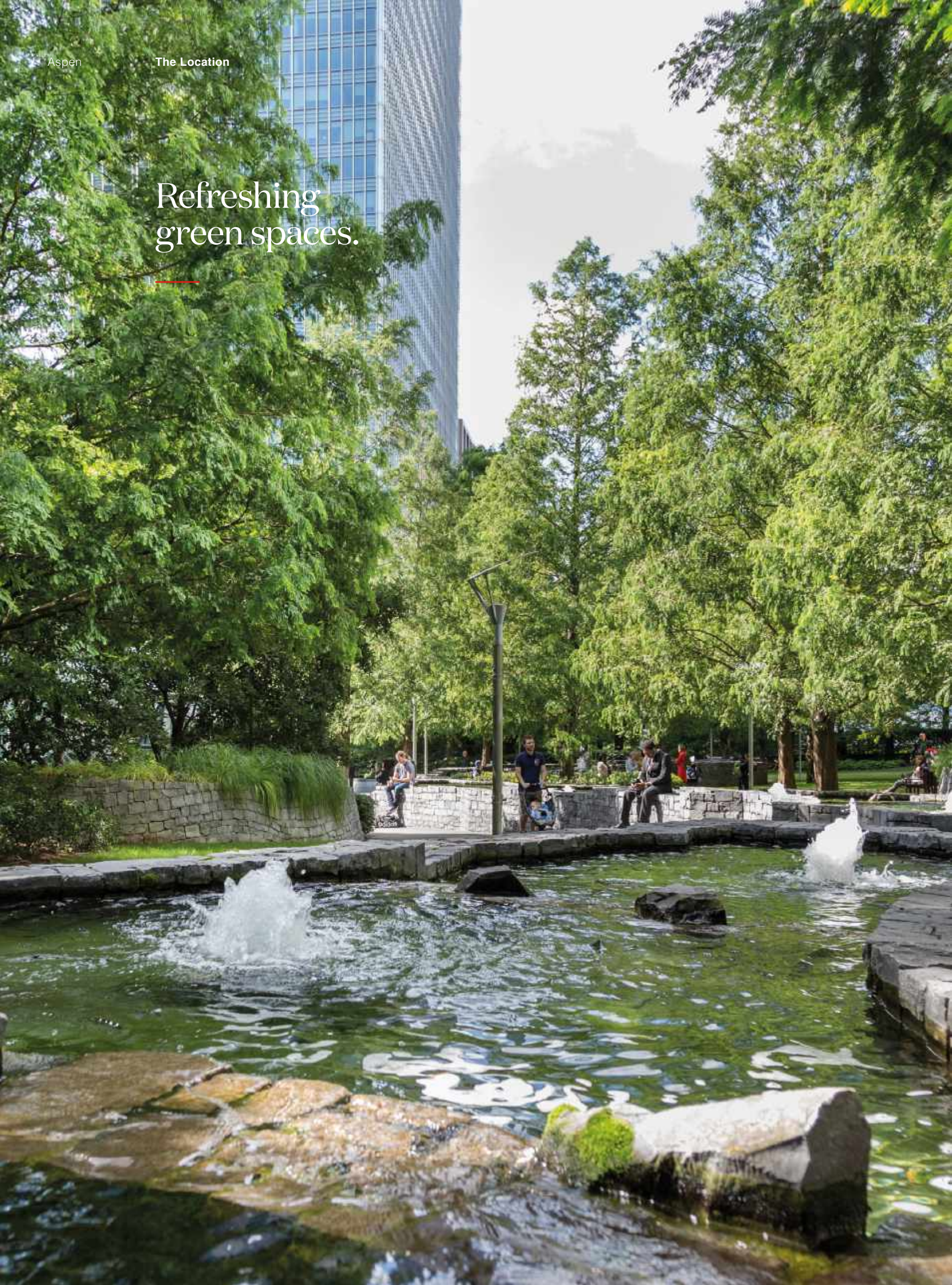
# Engaging work spaces.

**WITH QUIET GREENS, COSY CAFÉS OR COMMUNAL WORKPLACES, ONE IS NEVER FAR FROM A PERFECT WORKING AND STUDYING ENVIRONMENT.**





Refreshing green spaces.



## The joy and surprise of public art.

CANARY WHARF HOSTS A MULTITUDE OF EXHIBITIONS AND EVENTS THROUGHOUT THE YEAR. THE PUBLIC SCULPTURES FORM ONE OF THE COUNTRY'S FINEST COLLECTIONS OF PUBLIC ART.



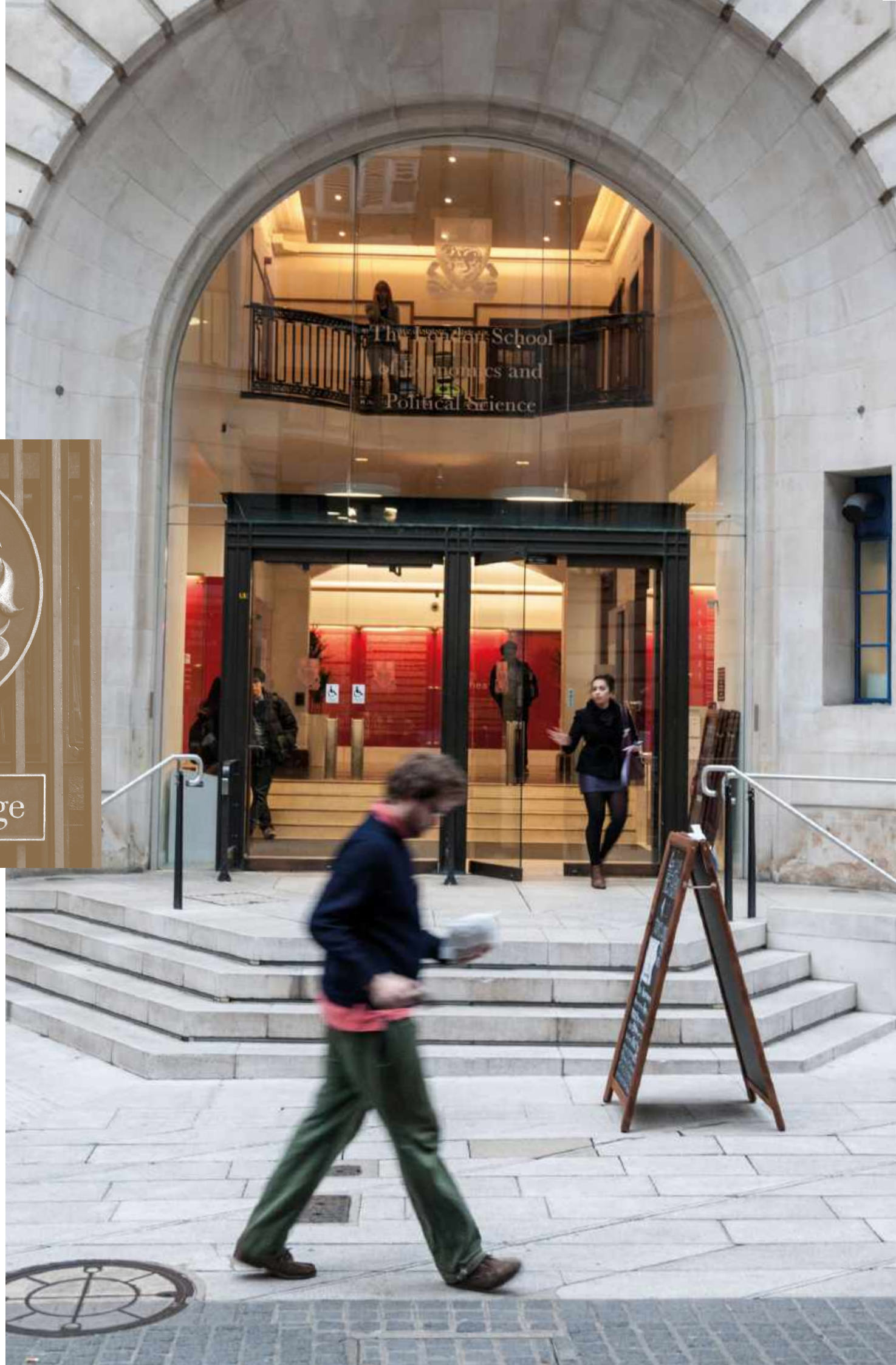
### PUBLIC ART

An exemplary environment created by an extensive art collection of 100+ public sculptures and year-round programme of arts, music and leisure events.



Aspen is in  
easy reach  
of London's  
world famous  
universities  
and colleges.

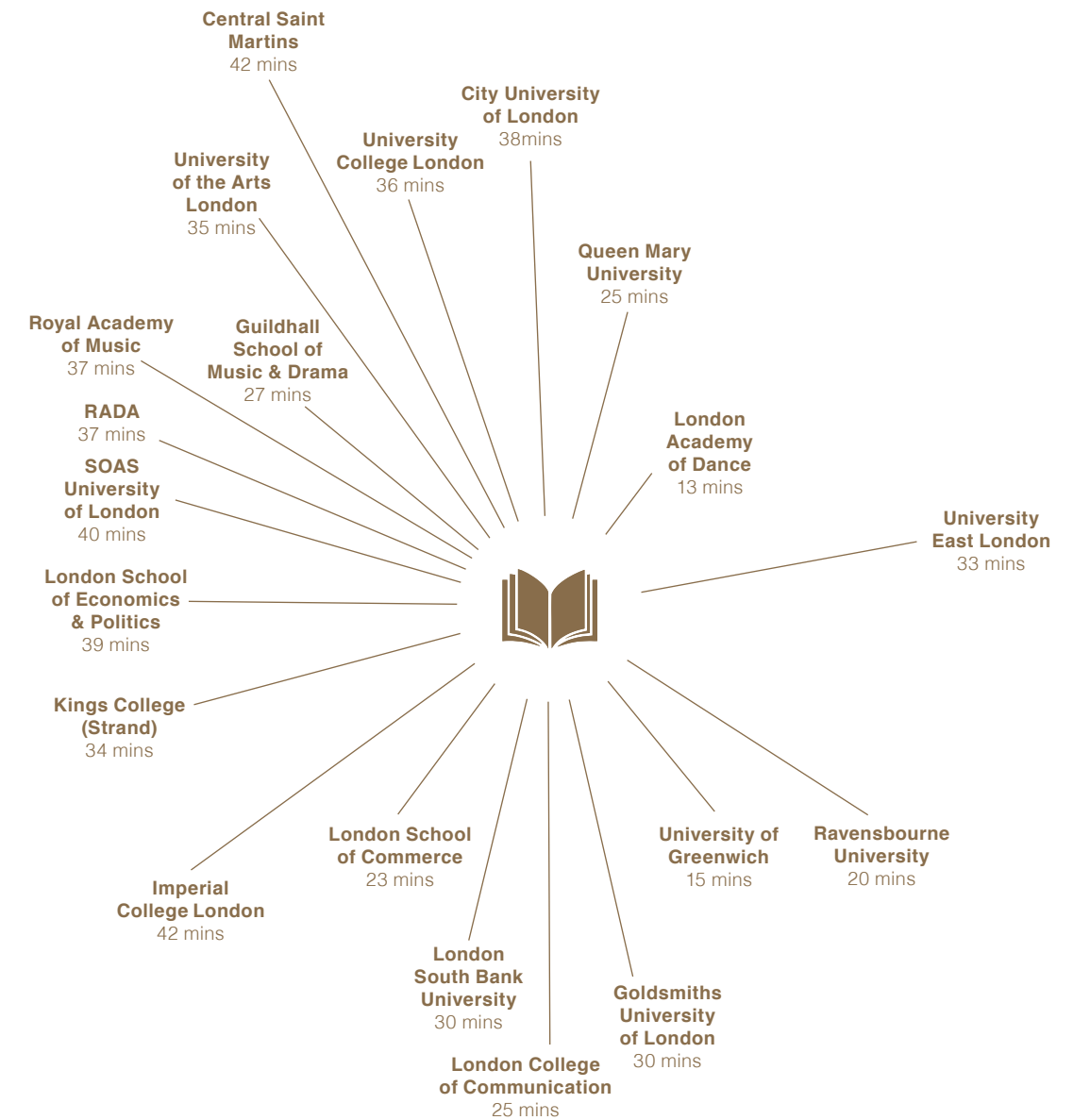




**King's College**

**THE BEST EDUCATION**  
Renowned for their world-class educational standards, King's College, University College London, Imperial College and London School of Economics (pictured right) attract the brightest talent from around the globe.

**WITH A WIDE RANGE OF WORLD-RENOWNED UNIVERSITIES AND LEADING ACADEMIC INSTITUTIONS, FROM LAW AND MEDICINE TO THE ARTS AND MUSIC WITHIN EASY REACH. THERE ARE ENDLESS OPPORTUNITIES WHERE YOUNG MINDS AND THE TALENT OF TOMORROW CAN THRIVE.**



All travel times starting from 50 Marsh Wall, E14 9TP, and using public transport. Source: TFL Journey Planner.

02/

CONSORT  
PLACE

*The  
Destination*



Vibrant.  
Verdant.  
Brilliant.



02/

# CONSORT PLACE

*The Destination*

Vibrant.  
Verdant.  
Brilliant.

---

---

## WINDMILL NEIGHBOURHOOD

Aspen and Consort Place on Marsh Wall are situated in an area originally known as Millwall. Unsurprisingly, this is a consequence of a large number of windmills being located down the west side of the Isle of Dogs to benefit from the prevailing winds blowing down the Thames.

The windmills were built on the elevated ground created by a marsh wall constructed to protect the land that had been drained for cattle grazing. They were first mentioned in the 12th century and one of the earliest images was in 1703 in Gascoyne's Survey of St Dunstan. Most of the mills were used for corn-grinding and later for oil-seed crushing.

With twelve windmills, no other area of London could boast of having so many but sadly they had all gone by the end of the 19th century.

---





**HEALTH & EDUCATION**  
Education and a health centre further enrich the communal amenities available to residents.



**CAFÉ, RESTAURANTS & BAR**  
Consort Place offers an abundance of options to unwind, socialise and entertain friends and family.



**PUBLIC HOUSE**  
The historic Victorian North Pole is an embodiment of the strong cultural connections to the area's maritime and mercantile roots.



**CONSORT PLACE**

A new destination that's steeped in history, with a vibrant future that's yours to embrace.

The vision of Consort Place is to create a truly vibrant destination and inclusive community – where families, individuals and friends can enjoy this eclectic oasis.

An immaculately landscaped public realm with feature trees, the new square is surrounded by a health centre, an education facility, a community hall, along with restaurant, bars, cafés and all the amenities of the new Dorsett Hotel.

The crowning gem on Consort Place is the North Pole public house. Originally opened in 1860 during the heyday of the London docks. It is amongst the last remaining of the 43 local pubs that once thrived on the Isle of Dogs. The North Pole is now being restored to its former glory and will be everything a neighbourhood local should be.

The Dorsett Hotel is the perfect place to wind-down after a fitness workout or just a busy day. Residents can enjoy a handcrafted cocktail served in the rooftop bar, a meal in the restaurant, or just a coffee between meetings.

Consort Place is where a rich tapestry of life unfolds, and it's yours to be a part of.



Turning off Marsh Wall and weaving down the landscaped pathway, you emerge into the bustling and vibrant community that is Consort Place.





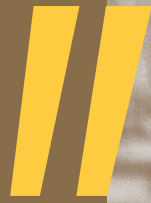


**THE SQUARE**  
The heart of Consort Place, the square is complemented with attractive landscaping and imaginative lighting. A vibrant open space to relax, play or simply catch up.



**THE NORTH POLE  
PUBLIC HOUSE**

Adjoining the square, this refurbished 160-year old public house is set to reopen its iconic green doors at the centre of Consort Place. On the far side stands the building accommodating the education facility, community hall and affordable housing.



A brand new  
and vibrant  
Dorsett Hotel  
will be the perfect  
complement  
to Aspen at  
Consort Place.





#### HOTEL ROOFTOP BAR

Overlooking London, the Dorsett Hotel Rooftop Bar will be a remarkable venue in which to meet and enjoy the panoramas.

#### DORSETT HOTEL

## All the magic of an international hotel for Aspen residents.

One of Asia's fastest-growing international hospitality groups, the Dorsett brand is renowned for its stunning contemporary destinations in some of the most vibrant cities of the world. Dorsett's popularity is centered around fostering a sense of heartfelt hospitality whilst keeping in tune with the authenticity of the surrounding neighbourhood.

The result is an unmatched experience, where British charm meets Asian hospitality. With 231 guestrooms, bars & restaurant, meeting rooms and gym, this upscale 4-star hotel offers guests the best of both worlds. Whether travelling for business, pleasure or simply hosting family, visitors can look forward to enjoying the very best of London at Consort Place – all within easy reach.

Aspen residents can take full advantage of all the hotel has to offer. Order an espresso made with perfectly roasted artisan coffee beans at the café that spills out onto Consort Place. Try a signature cocktail with Asian influenced flavours from the sky bar on level 21, with its postcard-perfect views across the Thames and London's skyline. Or indulge in eclectic food served at the terrace restaurant.



**EASTERN TERRACE**  
The elevated terrace restaurant with its indoor and outdoor seating is part of the elegant Dorsett Hotel open to all.

03/

THE  
ASPEN

*Capital  
landmark*



Destination.  
Innovation.  
Inspiration.

---

03/

THE  
*Capital  
 landmark*  
 ASPEN

Destination.  
 Innovation.  
 Inspiration.

---



---

#### A WORLD OF TRADING

The reputation of Canary Wharf as a global hub for financial services merely echoes the area's past as one of the great trading centres of the world.

There was a time in the 19th century when the docks neighbouring Aspen could accommodate some 600 ships and in the early years they were the destination for all incoming goods from the West Indies. Initially, the principal trade was in rum, molasses and sugar but commerce widened with a vast array of timber, along with wine, cork, indigo, spices, coffee and other commodities arriving in great quantities. Later the trade expanded to grains, fruit and vegetables, before the docks before finally closed in the 1980s in the wake of the container revolution.

London Docklands Development Corporation was then formed with the objective of regenerating and finding new uses for the former docks.

---



## ASPEN

### Soaring to great heights, Aspen will mark an elegant, vibrant and cosmopolitan community.

The Aspen name is inspired by the tall, distinguished and elegant tree that is said to symbolise beauty, adventure and self-expression. The tree was imported into London during the 18th century for its smooth and strong timber, creating a connection with the area's heritage of exotic and luxury goods arriving into West India Docks.

Just like its namesake, Aspen as a building defines contemporary living and elegance.

Its slenderness is emphasised by a contrasting curvilinear concave and convex profile with the height articulated into three distinct sections. The resulting subtle variations in the shading across the facade lends the building a distinctive grace and fluidity.

Inevitably, Aspen's height affords glamorous panoramas. Residents can gaze out towards the famous cluster of Canary Wharf itself, the City of London to the west, Greenwich Peninsula to the east, Olympic Park to the north and historic Maritime Greenwich to the south.





ISLE OF DOGS AND CANARY WHARF HAVE BEEN LONDON'S GATEWAY TO THE WORLD, AND CREATING A LANDMARK FOR A DISTINGUISHED ASIAN DEVELOPER FEELS APPROPRIATE IN THE CONTEXT OF TODAY.



FRED PILBROW  
Senior Founding Partner



## ARCHITECTURE

### Award-winning architects, Pilbrow & Partners, are dramatising the London skyline with Aspen.

Pilbrow & Partners is one of London's most progressive and sought-after architectural and urban design studios, whose work is renowned throughout the UK and internationally.

Their awards include the American Architectural Prize and Planning Award for the UCLH Hospital and Architect's Journal's Architecture Tomorrow Award for their recent work in Canary Wharf.

Principal Fred Pilbrow saw multiple opportunities to optimise their solution for Aspen and its surrounding Consort Place, 'We believe people love great light and great views in the homes in which they live. We focused on maximising the connection to the exterior; the building's three petals create six corners, consequently the majority of the apartments benefit from fabulous dual aspect views. It also gives a wonderful connection to the water and to the distinctive loop of The Thames that curls around the panoramas.'

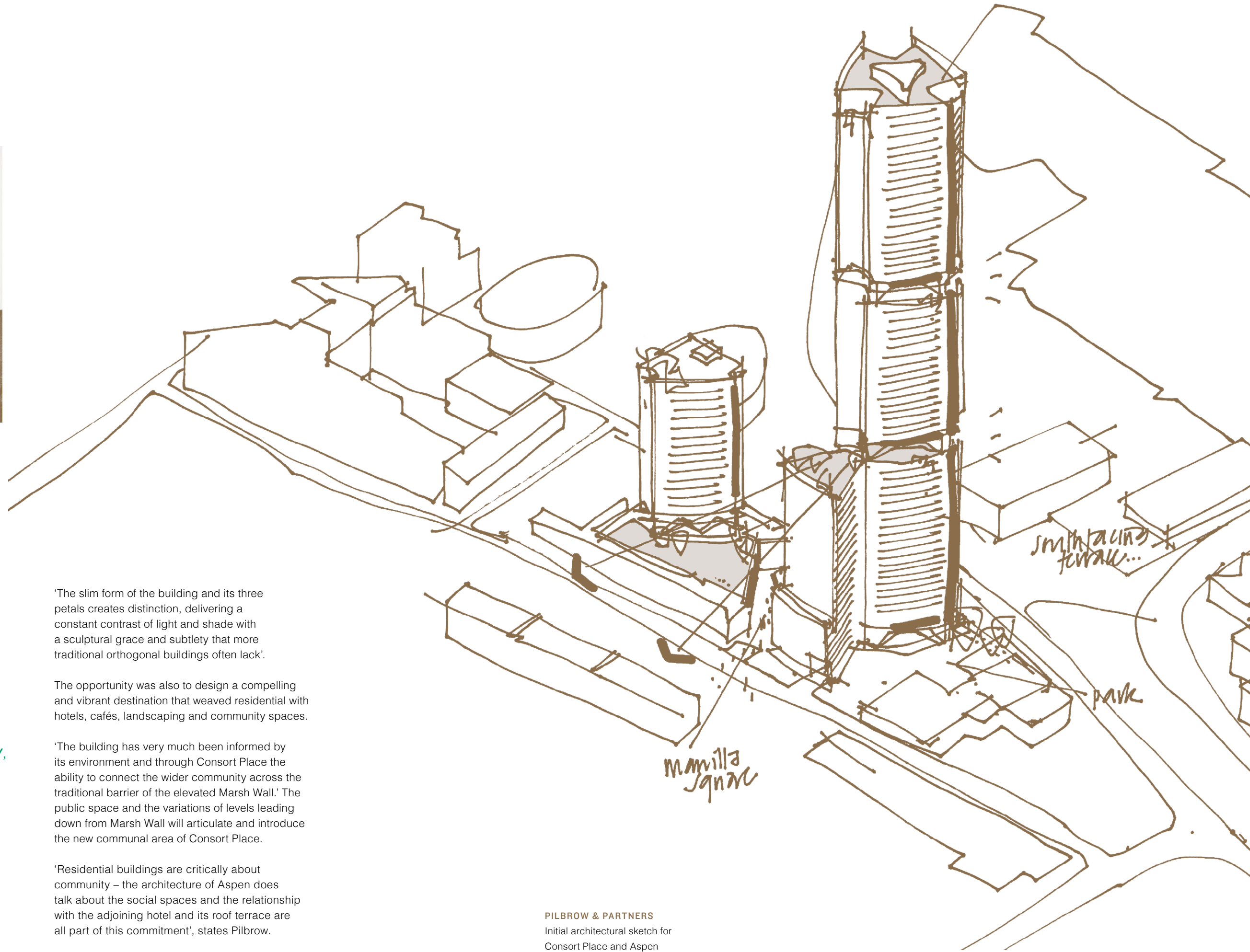
Pilbrow has always seen Aspen as the apex of a tall building cluster that complements the famous silhouette of Canary Wharf itself. Equally significant was to create a sense of difference between the building and its neighbours.



**I AM VERY EXCITED BY THE PUBLIC SPACE THAT CONSORT PLACE AND ASPEN BRINGS FORWARD: A NEW PUBLIC SQUARE, NEW CONNECTIVITY, MULTIPLE ENGAGING LEVELS, LANDSCAPING AND USES TO DEVELOP A SENSE OF ACTIVITY, AN AUTHENTIC VIBRANCY.**



**FRED PILBROW**  
Senior Founding Partner



'The slim form of the building and its three petals creates distinction, delivering a constant contrast of light and shade with a sculptural grace and subtlety that more traditional orthogonal buildings often lack.'

The opportunity was also to design a compelling and vibrant destination that weaved residential with hotels, cafés, landscaping and community spaces.

'The building has very much been informed by its environment and through Consort Place the ability to connect the wider community across the traditional barrier of the elevated Marsh Wall.' The public space and the variations of levels leading down from Marsh Wall will articulate and introduce the new communal area of Consort Place.

'Residential buildings are critically about community – the architecture of Aspen does talk about the social spaces and the relationship with the adjoining hotel and its roof terrace are all part of this commitment', states Pilbrow.

**PILBROW & PARTNERS**  
Initial architectural sketch for  
Consort Place and Aspen



Obsession with detail permeates every element of the interiors and exteriors.





**HBA RESIDENTIAL**  
Charlie Caswell, London  
Principal and Patrycja  
Madecka, Senior Designer.

## INTERIOR DESIGN

World-renowned interior designers, Hirsch Bedner Associates, foster a highly creative and collaborative environment to create the signature looks of today's luxury brands.

HBA Residential are the luxury residential specialists within Hirsch Bedner Associates, a leading interior design company with a detailed industry knowledge and significant talent that has resulted in some 200 global design awards in the past decade alone.

The team designing the interiors at Aspen were profoundly informed by the heritage and language of the local area. 'The spices, the trade, the docks, the multi-sensory experience it must have been when the docks were at their height, were all inspirations for our designs', states Charlie Caswell, who leads the London office.

'We have referenced the texture and materiality of the ships and vessels that were so important to the area's history; timbers, brass, patterns and



### ONE-BED LIVING ROOM

All the apartments are designed on an open-plan layout to maximise the space available and create the opportunity for flexible living.

colours are all essential elements within our concept'. This focus on texture and colour is particularly evident in the approach taken in the public and social areas where the warmth and vibrancy of the spice and coffee trade, rigging and sails and tactile timber create a striking and distinctive style and atmosphere.

Patrycja Madecka, Senior Designer, continues, 'Aspen is a modern building and whilst we are keen to respectfully reference the past, the essence of everything we are doing is highly contemporary. There is also a nod to the building's name, by evoking the Aspen tree in form of patterns and materiality throughout the residential amenities.'

The apartment designs and layouts prioritise the views. 'We have incorporated a lot of reflective surfaces to play with the light, while suggested furniture layouts optimise the sense of space, orientating users towards the windows'. One of many items that contribute to making Aspen's interiors completely unique is the bespoke tiling and wall coverings created by HBA Residential that reference the buildings plan form, creating a subtle dialogue between the interior and architecture.



**LIVING ROOM**  
Showcases the sensational view  
and spacious interior design.



**LIVING & DINING ROOM**  
Rooms are flooded with stunning natural daylight and provide spectacular views through the full-height glazing.



**MASTER BEDROOM & ENSUITE**  
Use of timber and warmer accents reference the Aspen tree, setting a contemporary elegance with subtle touches.



**LIVING & DINING ROOM**

Open plan living-dining  
with design of the highest  
quality throughout.





Designs of the highest standard offset by a rich and sophisticated colour palette.





**LIVING & KITCHEN**  
Bespoke designer kitchen with accents in copper bronze tone and marble effect, solid surface worktop with feature shelf deliver opulence to the kitchen.



**BEDROOM**  
A rich colour palette of indigo blue, cardamom green and orange accessories is inspired by the exotic cargo trade of the area.



**BATHROOM / ENSUITE**  
Copper bronze tones, marble effect solid surfaces, dark metal frames and feature wall tiling create a calming but striking design.



**STUDIO**  
Stylish and contemporary, the studio apartments maximise on space without compromising on comfort.

Drawing on  
the past yet  
looking to  
the future.



## SPECIFICATION

Inspired by beautiful riches and treasures that complement and contrast.

The rich textures and colours from the special commodities shipped to West India Docks during Victorian times, influence a variety of contemporary materials used to create calm yet vibrant layers throughout the apartments.

Leather was used to create everything from simple tools to the lining of the vessels. Seashells like the chambered nautilus, known for its beautiful, coiled protective casing, were collected for decoration.

Metal, glass and timber in Aspen's apartments are seen in the hardware and details, reflecting the structure of the warehouses built to service the importing and exporting of exotic produce from afar. Feature joinery use the language of the vertical lines to reference the vernacular language of the architecture of the building. Hints of indigo blue, cardamom green and orange are inspired by the exotic cargo, while the industrial history of the area is further interpreted through the use of contrasting dark metal details and brassware.

The kitchen palette is simple and tonal, giving opportunity for warmth and comfort with complementary timbers and contrasting brassware. The use of copper bronze accents gives the space a feeling of opulence and is an additional point of interest. The concave and convex nature of the building creates geometric shapes, which provide interest through pattern and detail.

## APARTMENT SPECIFICATION

---

### GENERAL

- Interior Design by renowned Hirsch Bedner Associates and HBA Residential
- Open plan living designed to optimise views
- Openable windows to habitable rooms

### INTERIOR FINISHES

- Bespoke veneer entrance door with anthracite ironmongery
- Engineered wood flooring to kitchen and living spaces
- Bespoke internal doors with anthracite ironmongery
- Neutral paint palette to walls throughout

### KITCHEN/LIVING ROOM

- Bespoke designer kitchen
- Custom-designed compartmentalised cupboard units with copper bronze tone trims
- Feature copper bronze tone cooker hood with integrated recirculation extractor fan
- Engineered marble stone worktop, splash-back and feature shelf
- Under-mounted sink with anthracite mixer tap
- Concealed LED lighting beneath wall mounted units
- Siemens integrated oven
- Siemens integrated microwave (three-bedroom apartments only)
- Siemens induction hob
- Siemens integrated multifunction dishwasher
- Siemens integrated frost-free fridge freezer
- Integrated refuse and recycling bins

### MASTER BATHROOM AND EN-SUITE

- Porcelain tiles to floor and walls with textured feature tiled wall
- Bespoke marble effect vanity unit with anthracite mixer tap and copper bronze towel rail
- Wall-mounted WC with concealed cistern with dual flush
- Mirrored storage cabinet with anti-mist, shaver socket and feature lighting
- Bath with integrated bath filler and separate hand shower (Master Bathroom)
- Walk-in shower with overhead shower and separate hand shower (Ensuite)
- Anthracite edged shower/bath screen
- Anthracite wall mounted heated towel rail
- Anthracite toilet roll holder & hook

### BEDROOMS

- Bespoke built-in wardrobes to master and second bedroom
- Broadloom carpet

### UTILITY CUPBOARD

- Washing machine/dryer
- Cooling and heating interface unit
- Consumer unit
- Storage

### ELECTRICS, HEATING AND COOLING

- Energy efficient lighting throughout
- Anthracite switches and sockets
- Heating and cooling provided by FCU with easy and responsive control system
- Underfloor heating to bathrooms
- Individually metered systems provide heating and hot water from a centralised energy centre
- Heat/smoke detectors to all apartments

### IT/AV

- Satellite, terrestrial TV and telephone connections
- High speed fibre optic connection into each apartment

### ADAPTABILITY

- Some apartments are wheelchair adaptable, details on request

### WARRANTY

- All apartments are covered by building guarantee insurance

## MANAGEMENT AND SECURITY

---

- 24/7 Concierge Service
- CCTV coverage to external entrances and communal areas
- Video entry system connected to Concierge
- Electronic Access control system
- Cycle storage with secure access





Designed to capture the amazing views of The City, Greenwich and Canary Wharf itself.





Surrey Quays &  
Greenland Dock

Westminster &  
Houses of Parliament

Harrods

The Shard

London  
Eye

Bond  
Street

City of London

Limehouse Dock

Canary Wharf Pier

# A view of the City



Mudchute  
Equestrian Centre

University of Greenwich &  
National Maritime Museum

Greenwich Observatory

Cutty Sark

Millwall Dock

Docklands Sailing &  
Watersports Centre

Sir John McDougal Gardens

# A view of Greenwich



Docklands  
Museum

Canary Wharf  
DLR Station

Canary Wharf  
Crossrail Station

South Quay Footbridge

O2 Arena

London City  
Airport

Stratford & Olympic  
Stadium

One Canada Square

Canary Wharf  
Underground

South Dock

# A view of Canary Wharf



04/

# THE LIFESTYLE

*Bright  
D & Light*



Vibrant.  
Luxurious.  
Surprising.

---

04/

THE  
LIFESTYLE

*Bright & Light*

Vibrant.  
Luxurious.  
Surprising.

---



---

WHERE THE EXTRAORDINARY  
TALE OF SHACKLETON'S  
ENDURANCE BEGAN

Sir Ernest Shackleton was a British polar explorer best known for the remarkable story of survival during the 1914-1917 Trans-Antarctic Expedition.

His ship, SS Endurance, named after Shackleton's family motto 'Fortitudine Vincimus' meaning 'By Endurance We Conquer', was refitted and modified before the journey to the South Pole in Regent Dry Dock, a short distance from Aspen and Consort Place.

There are many press reports and photographs of the ship leaving Millwall Dock at the start of its fateful journey. SS Endurance became ice bound in the Weddell Sea in early 1915 and subsequently sank.

All of the crew and Shackleton himself survived as a result of incomprehensible feats of navigation, unwavering hope and fortitude, all of which gave birth to numerous books, films and television serials.

---

# ASPEN

## CLUB



### THE ASPEN LIFESTYLE

Living at Aspen is as much a brilliant lifestyle as an elegant home.

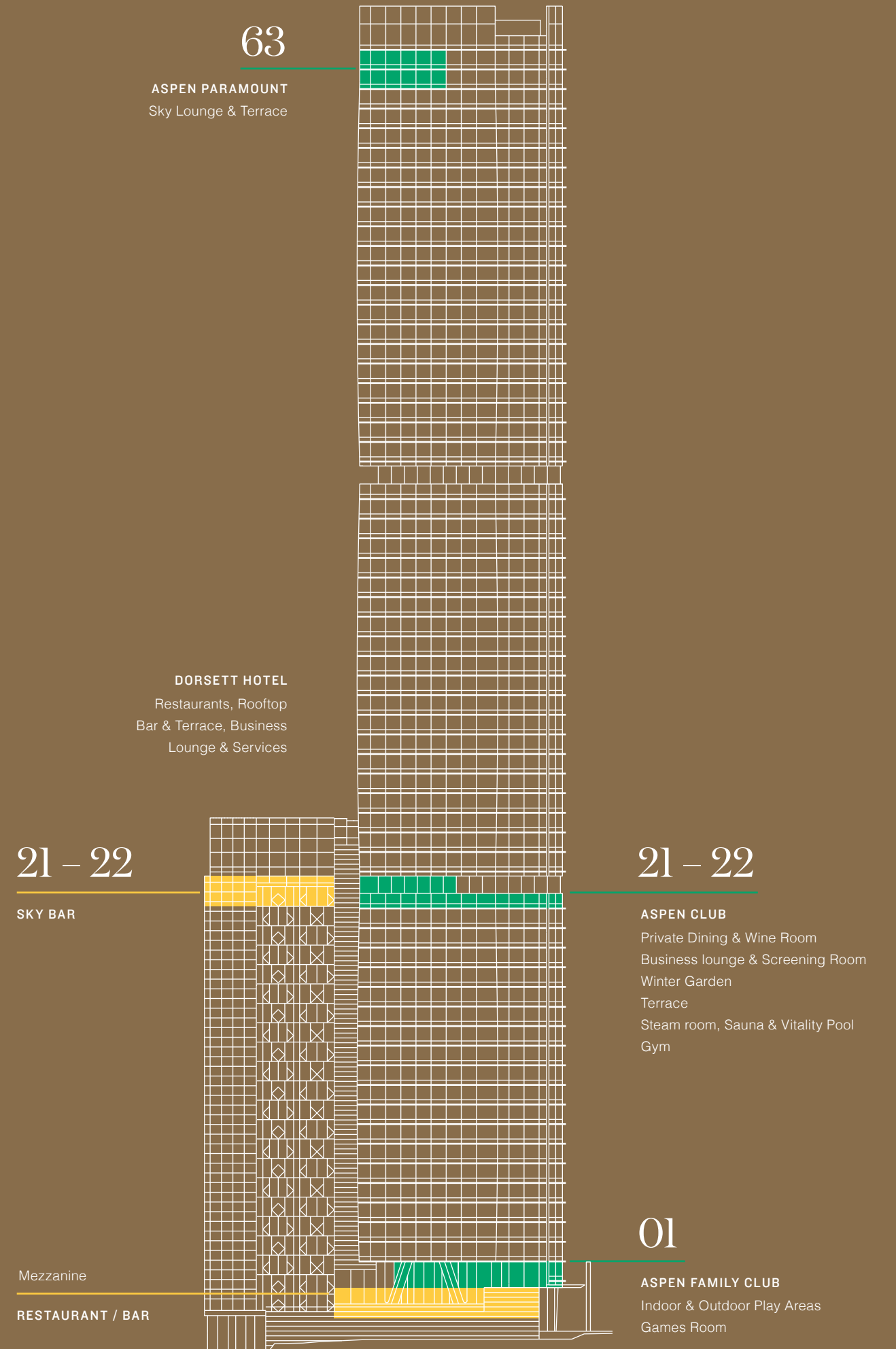
Aspen is where living meets lifestyle. At the very summit is the glorious Aspen Paramount lounge designed by HBA Residential, with its magnificent views over one of the world's great cities.

Whether you are working, studying or playing, Aspen is designed with you in mind. The Aspen Club will provide private dining and wine tasting room, screening room, sophisticated winter garden and areas in which to meet and host. For fitness and relaxation, the wellness centre with its gym, steam room, sauna and vitality pool, is the perfect place to unwind.

Lower down the Aspen Family Club on the first floor will include a games room and an indoor and outdoor play area.

The adjoining Dorsett Hotel, the latest addition to this exceptional hospitality brand's portfolio, also provides a number of additional dedicated services to residents.

Aspen is a lifestyle. The residents' amenities provide spaces to relax or entertain, work or merely indulge. Adjoining are the facilities of the stunning Dorsett Hotel.





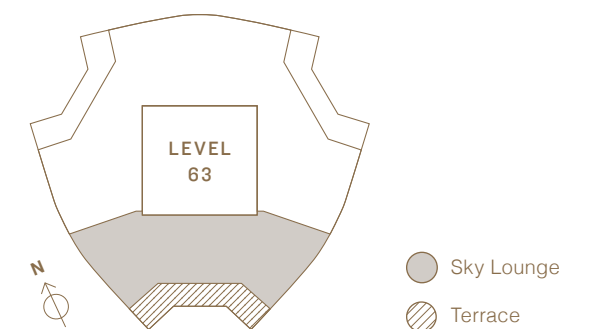
**SNUG ROOM**

A sanctuary in the sky, the elegant snug room in Aspen Paramount

**ASPEN PARAMOUNT**

A glorious sky lounge with 180 degree unobscured panoramic views, Aspen Paramount is a truly extraordinary venue.

The breath-taking sky lounge of Aspen Paramount sits on the 63rd floor. This stunning venue is designed around a handsome and stylish bespoke bar area, surrounded by a variety of seating areas, from an intimate snug room to a sophisticated lounge and a sensational terrace. The opulent interiors combined with double height ceiling have all been meticulously designed and detailed. Whether entertaining friends in the evening or claiming a peaceful corner for work during the day, Aspen Paramount is a unique experience for the Capital.







**ASPEN PARAMOUNT**  
Defining luxury – warm woods,  
Terrazzo details, accent velvets  
and contrasting metals form  
exciting design features.

**PRIVATE DINING & WINE ROOM**

Host sophisticated celebrations, business meetings or even a wine tasting event with faultless service at the private dining room. The bespoke wine room can comfortably store residents' wine at climate-controlled temperatures.



**STEAM ROOM, SAUNA & VITALITY POOL**

While away a few indulgent hours in the vitality pool or sauna to rejuvenate.

**ASPEN CLUB**

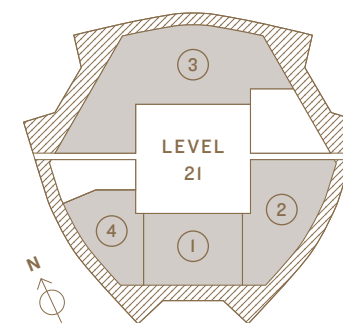
A sophisticated and elegant residents' club designed for wellness and enjoyment.

The Aspen Club, located on levels 21 and 22, has been carefully designed to enhance the residents' lifestyle. As you enter through the door you will be greeted by the Club host, where you can enjoy the wealth of amenities on offer including a private dining and wine room, a business lounge, screening room and the peaceful oasis of a winter garden. The Club's health and wellness areas, comprises a fitness gym with state-of-the-art equipment, sauna and steam room, changing rooms and a relaxing vitality pool from which to enjoy the views.

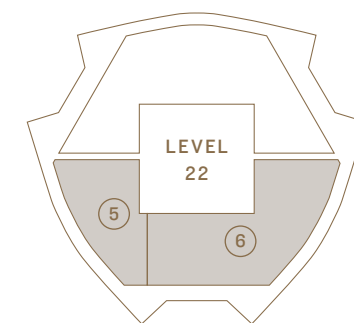


**GYM**

The breathtaking, state-of-the-art gym on the 22nd floor.



- ① Arrival Lounge
- ② Private Dining & Wine Room
- ③ Business lounge & Screening Room
- ④ Winter Garden
- ⊘ Terrace



- ⑤ Steam Room, Sauna and Vitality Pool
- ⑥ Gym



**BUSINESS LOUNGE &  
SCREENING ROOM**

The amenities within the Club are flexible and multi-functional, with moveable walls providing opportunities for all sorts of occasions.



### ASPEN FAMILY CLUB

## A place to work and play, a place for all ages.

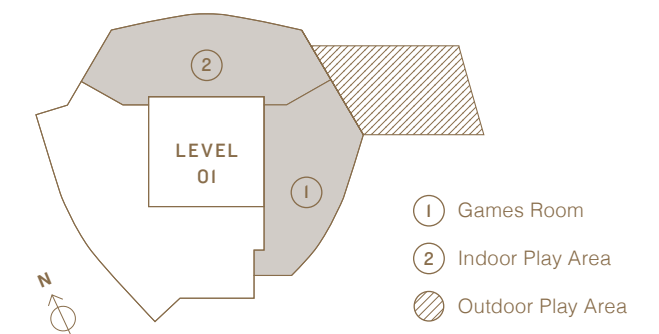
The Aspen Family Club, located on the first floor features spacious indoor soft-play area for the younger children and can also serve as a function room to host events and celebrate milestones. Additionally, a bright and light adjoining games and family room is a place for all to unwind – complete with arcade, classic games, pool and football tables. The Family Club interiors also connect seamlessly to a thoughtfully designed external play and seating spaces on a connecting terrace.

#### GAMES ROOM

A bright and spacious area to unwind and enjoy.

#### PLAY AREA

Dedicated child-friendly indoor and outdoor play areas will keep the young entertained.





A dedication  
and commitment  
to make our  
residents' lives  
a pleasure.

#### TAXI, CHAUFFEUR AND CAR HIRE

The Concierge will assist in any travel arrangements and can organise a variety of transport from the latest limousines to electric hire cars.

#### CONCIERGE AND ASPEN CLUB CARD

### Convenience and lifestyle.

---

At the heart of a magnificent lifestyle is service. At Aspen the Concierge will be on hand to make our residents' lives run smoothly.

Time being the greatest luxury, the team will be available to take the pressure away by assisting with a multitude of tasks. They will be available to book taxis or recommend and reserve restaurants; arrange tickets in famous Theatreland or for the ever diverse attractions of the O2; organise apartment cleaning; receive deliveries; sort dry cleaning or laundry services or merely recommend the best place to find those special presents or additions to your apartment. The Concierge team's mission is to improve the lives of the Aspen resident.

Residents will also be provided with the Aspen Club Card. This exclusive membership can be used to book services through the hotel, providing special rates on the rooms themselves, within the restaurant and allow resident's access to all the à la carte benefits of having a world respected hotel as a neighbour.



#### PRIVATE PARTIES

Through the Dorsett Hotel, a variety of private functions can be catered for, both at home and within the Club.



#### HEALTH & WELLNESS

In addition to the Aspen Club facilities themselves, recommended instructors can be booked alongside a variety of at home beauty services.



#### BOOKINGS & RESERVATIONS

The Concierge will be on hand to recommend the best shows, events and concerts and will assist in securing tickets.

#### RESIDENTS À LA CARTE SERVICES

## The personal service of the Dorsett Hotel on your doorstep, for all Aspen residents.

Through the Concierge and Aspen Club Card, residents will enjoy a multiplicity of benefits and services. Cardholders will gain:

- Aspen Club Card rates in all Consort Place restaurants, cafés and bars.
- Aspen Club Card rates at the Dorsett Hotel

Residents will also have access to\*:

- Taxi, chauffeur and car-hire services
- Daily newspaper delivery
- Flower delivery services
- Housekeeping service
- Laundry and dry cleaning services
- Home beauty treatments
- Private fitness, yoga and Pilates instructors
- Babysitting services
- Pet care services
- Access to on-call Dorsett Hotel doctor
- Catering and staffing services for parties and private functions
- Private bar service in the Aspen Wine Room and Aspen Paramount
- Small item maintenance

And the team will also provide a London Orientation Programme for those new to the capital.

#### FLOWER DELIVERY

Delivery of fresh flowers on special occasions can be arranged with the Concierge.



Aspen residents will also benefit from the Dorsett Hotels International Your Rewards programme that delivers:

- Automatic upgrade to Platinum Member status that provides discounted hotel rates and other benefits.
- Discounted rates in selected restaurants and bars.

*\*These à la carte services will be provided at an additional cost and are subject to demand and availability at the time.*

05/

THE  
TEAM

*Experienced*



Dedicated.  
Determined.  
Dynamic.

---



05/

THE  
TEAM

*Experienced*

Dedicated.  
Determined.  
Dynamic.

---

---

**SS GREAT EASTERN LAUNCHED**

South of Aspen on the river was where the extraordinary 22,500-ton steamship, SS Great Eastern, was built and launched.

Designed by Isambard Kingdom Brunel, she was built to carry 4,000 passengers and cargo. At the time of her launch in 1858 she was the largest ship in the world. Nearly 700ft long, She was also the first ship to be constructed almost entirely of metal.

Work began on the SS Great Eastern in the spring of 1854 and was completed by November 1857. It is still possible to go and see the remains of the foundations of the launch ramp leading into the Thames.

---



**THE TOWERS**  
Unparalleled luxury development at Elizabeth Quay in Perth, Australia.



**ANGEL MEADOWS & NORTHERN GATEWAY**  
Regeneration of over 15,000 homes in Manchester



**HORNSEY TOWN HALL**  
A meticulously restored iconic building and new development for Crouch End, London.



Far East Consortium International Limited is a leading property conglomerate which specialises in property development, hospitality and car parking ventures across mainland China, Hong Kong, Malaysia, Singapore, Australia, New Zealand, mainland Europe and the United Kingdom. Listed on the Hong Kong stock exchange since 1972, the company brings over forty years' experience operating in the Asia Pacific region.

Our highly skilled team brings its extensive expertise to the UK to create vibrant places for people to live, work and play. Far East Consortium opened its UK head office in London in 2011 and a regional office in Manchester in 2016.

We have several mixed use developments in the pipeline including Meadowside in Manchester, launched in 2017, Hornsey Town Hall in Crouch End, launched in Spring 2018, Consort Place in Canary Wharf, launching in Q1 2020 and we will play a key role in the regeneration of Manchester's Northern Gateway, which will see the construction of over 15,000 new homes over the next decade.



**DORSETT SHEPHERD'S BUSH**  
Offering stylish and comfortable accommodation in West London.



**JIN BO LAW SKYBAR**  
A rooftop destination at Dorsett City with iconic views of London.



Dorsett Hospitality International is one of Asia's fastest-growing hotel groups.

Headquartered in Hong Kong, Dorsett now has an international footprint in 27 major cities worldwide with a total of 56 properties. The three core brands are Dorsett Hotels & Resorts, d.Collection, and Silka, along with sister company Trans World Hotels.

Since the Group's establishment in 2007, it has grown rapidly with hotels across China, Malaysia, Singapore, Japan, Australia, the United Kingdom, and Continental Europe.

The success is built around a consistent, considered and passionate approach to the Group's four core values of Integrity, inspiration, innovation, and initiative. The Dorsett Hotel at Consort Place will further strengthen the Group's presence in London.

## Pilbrow & Partners

Pilbrow & Partners is a 70-strong architecture and urban design studio, established in 2013. The practice is led by partners Fred Pilbrow, Tal Ben-Amar, Keb Garavito Bruhn, Sam Yousif and Gareth Wilkins, and specialises in complex mixed-use projects in sensitive heritage contexts.

As well as a team of architects and urban planners, the practice is supported by specialist resources in town planning, environmental analysis, parametric modelling, BIM, visualisation and model making.

Recent and current projects include The Waterman in Greenwich Peninsula, the new UCLH phase 5 hospital in Bloomsbury and the design of The Market Building at Canary Wharf's new Wood Wharf district. Also working for U+I on the redevelopment of 8 Albert Embankment including new homes, workspace, retail and a new home for the London Fire Brigade Museum.



Hirsh Bedner Associates is one of the world's largest interior design firms with over 20 offices across the globe. Backed by decades of experience and hundreds of completed projects, HBA is acknowledged as a world leader in the interior design and architecture industry.

HBA Residential is a boutique design house within the HBA group, focusing on exclusive, high end, residential commissions for a select group of clients around the world. Working on private houses, penthouses and luxury developments, HBA Residential caters specifically for high-end residential clients.

With offices in both London and Singapore HBA Residential offers a unique set up that allows a boutique and personalised service to a global clientele. The in house team of Architects, Interior Designers and FF&E specialists offer a full range of design services 'from the building envelope to the door handle'. As well as providing architecture and interior design services, HBA Residential work closely with each client to design and deliver bespoke joinery, furnishings, lighting and textiles that are unique to each project.

---

A development by



FEC Development Management Limited is appointed development manager of 50 Marsh Wall, 63-69, 68-70 Manilla Street, Isle of the Dogs, E14 9TP by the owner DRAKAR LIMITED (an FEC company incorporated in the Isle of Man with registered number 127355C), whose registered office is at Clinch's House, Lord Street, Douglas, IM99 1RZ, Isle of Man and trading address is at Ground Floor, 12 Stanhope Gate, London, W1K 1AW, England. DRAKAR LIMITED reserves the right to amend any of the specifications at any time at its absolute discretion as necessary and without any notice. DRAKAR LIMITED assumes no responsibility and shall not be liable to any person for any loss, damage or expense caused by reliance on the information in this brochure. Whilst reasonable efforts have been made to ensure that the information in this brochure is correct, it is designed specifically as a broad indicative guide only and accuracy cannot be guaranteed and no representation or warranty is made in that regard. This brochure and the information contained in it does not in any way constitute or form any part of a contract for sale, transfer or lease nor does it constitute a representation or otherwise form the basis of a contract. Photos, computer-generated images (CGIs), drawings and perspectives contained in this brochure may not relate to the development, are indicative only (and in particular some photography may be taken from similar Far East Consortium developments). Local maps and Artist illustrations of the site are not to scale, landscaping, gradients and street furniture may differ to what is shown and should not be relied upon as depicting the final as built development or apartment. All sales remain subject to contract. Designs and layouts of the development and apartments are indicative only and may change. The specification of the apartments is the anticipated specification at the date this brochure was prepared, but may be subject to change. Dimensions shown are approximate sizes only and actual sizes may be different once constructed. Contract specifications and dimensions may also be changed in accordance with permitted variances under the apartment sale contracts, although it is not anticipated that overall apartment sizes will vary by more than 5%. Furniture, wallcoverings, floor coverings, feature lighting and other fixtures shown in the CGIs and photographs are not included in sales and may differ. Consort Place and building names are marketing names only and will not necessarily form part of the approved postal address. All information regarding prospective non-residential occupiers represents current intention only and the final identity and/or nature of the occupiers may change. The facilities and services may not be available at the date of completion. Neither the agents nor any person in their employ has any authority to make or give any representation, warranty or guarantee (whether written or oral) in respect of or in relation to the development (or any parts of it). Prospective purchasers should satisfy themselves regarding the accuracy of the information provided in this brochure. No assumption should be made regarding any part or the whole of any plot or the estate not shown in the brochure and we recommend prospective purchasers visit and inspect the development site to understand its relationship to the surrounding area. January 2020.

