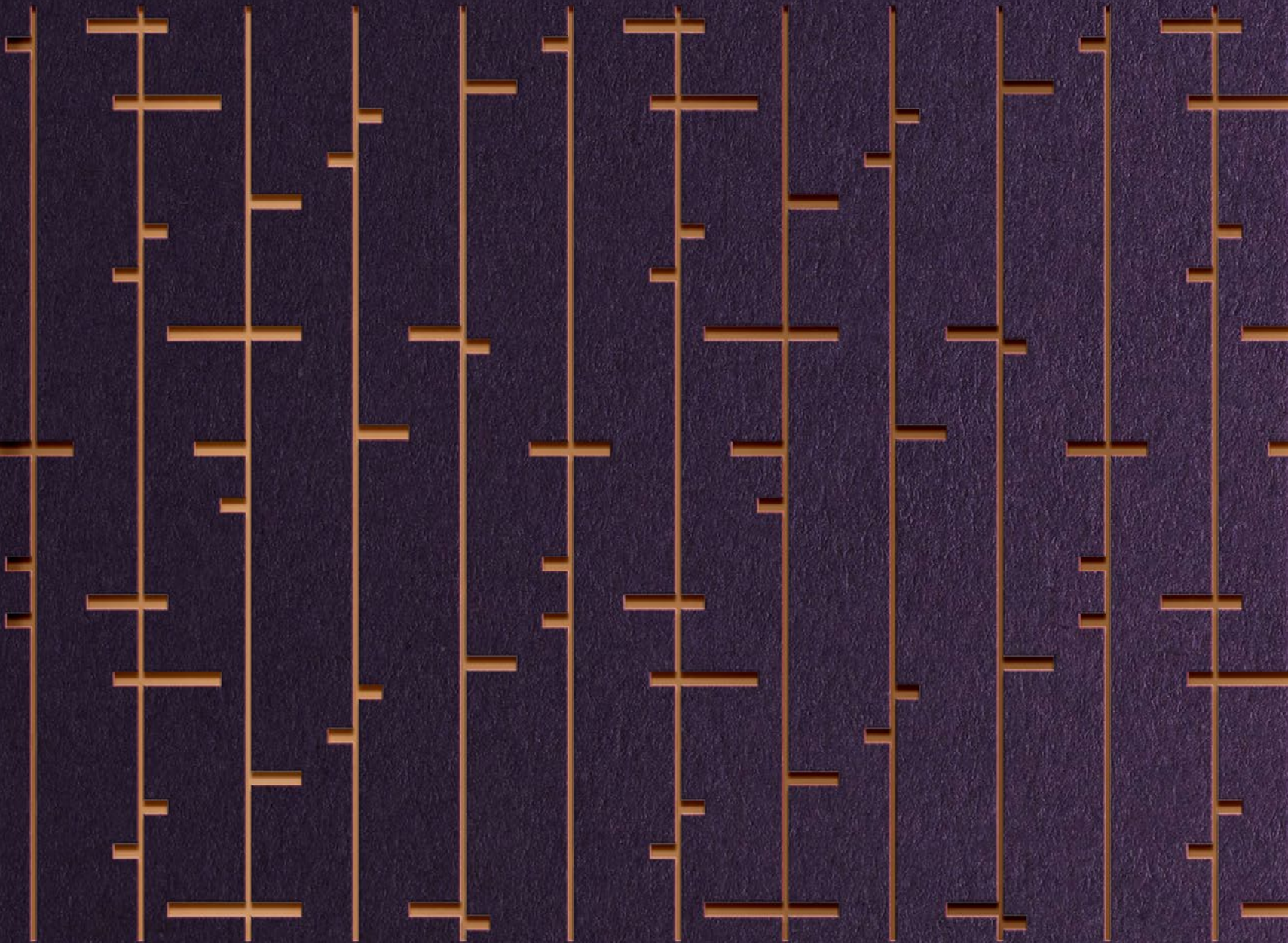


ASPEN

CANARY WHARF





Exceptional and
exquisite apartment
living amidst a vibrant
and cosmopolitan
new community with
astonishing views.

Tall and elegant, Aspen
at Consort Place defines
its district's skyline.

ASPEN





ASPEN

Soaring to great heights, Aspen will mark an elegant, vibrant and cosmopolitan community.

Designed by award-winning architects, Pilbrow & Partners, Aspen will dramatise the London skyline. Its slenderness is emphasised by a contrasting curvilinear concave and convex profile with the height articulated into three distinct sections. The resulting subtle variations in the shading across the façade lends the building a distinctive grace and fluidity.

Inevitably, Aspen's height affords glamorous panoramas. Residents can gaze out towards the famous cluster of Canary Wharf itself, the City of London to the west, Greenwich Peninsula to the east, Olympic Park to the north and historic Maritime Greenwich to the south.

With interiors designed by world renowned Hirsch Bedner Associates, Aspen defines contemporary living and elegance. The team were profoundly informed by the heritage and language of the local area, having referenced the texture and materiality of the ships, vessels and trade that were so important to the area's history.

Surrey Quays &
Greenland Dock

Westminster &
Houses of Parliament

Harrods

London
Eye

The Shard

Bond
Street

City of London

Limehouse Dock

Canary Wharf Pier

A view of the City



Mudchute
Equestrian Centre

Greenwich Observatory

Millwall Dock

Sir John McDougal Gardens

University of Greenwich &
National Maritime Museum

Cutty Sark

Docklands Sailing &
Watersports Centre

A view of Greenwich



Docklands
Museum

Canary Wharf
DLR Station

Canary Wharf
Crossrail Station

South Quay Footbridge

O2 Arena

Stratford & Olympic
Stadium

One Canada Square

Canary Wharf
Underground

South Dock

London City
Airport

A view of Canary Wharf





Destination.
Innovation.
Inspiration.

*Spectacular
& Spacious*

THE
FLOOR PLATES

Floorplans are intended to give a general indication of the proposed floor layout and refer to approximate measurements only. All stated dimensions are measured from the arrow points. You are strongly advised not to order any carpets, appliances or any other goods which depend on accurate dimensions before carrying out a check measure within your reserved plot following build completion. Final layouts and areas may change before completion. Total apartment area is given in NSA (Net Sales Area) and subject to a tolerance of +-5%. The provisions of the sale contract as to variations and tolerances shall prevail.

2 BEDROOM / 02.09

Total Internal Area 79.1 sq m / 852 sq ft
 Living & Dining 6120 x 4500 mm
 Bedroom 1 2750 x 4500 mm
 Bedroom 2 4400 x 2940 mm

2 BEDROOM / 02.08

Total Internal Area 78.6 sq m / 846 sq ft
 Living & Dining 5000 x 4790 mm
 Kitchen 3375 x 3400 mm
 Bedroom 1 2785 x 5865 mm
 Bedroom 2 3380 x 4895 mm

2 BEDROOM / 02.07

Total Internal Area 76.9 sq m / 828 sq ft
 Living & Dining 5180 x 4775 mm
 Bedroom 1 3180 x 6440 mm
 Bedroom 2 3230 x 5485 mm

STUDIO / 02.06

Total Internal Area 39.8 sq m / 428 sq ft
 Living & Dining 2915 x 5525 mm
 Kitchen 3130 x 2800 mm

1 BEDROOM / 02.01

Total Internal Area 54.4 sq m / 585 sq ft
 Living & Dining 5155 x 6775 mm
 Bedroom 3475 x 3970 mm

1 BEDROOM / 02.02

Total Internal Area 54.1 sq m / 582 sq ft
 Living & Dining 5450 x 5365 mm
 Bedroom 2770 x 5300 mm

2 BEDROOM / 02.03

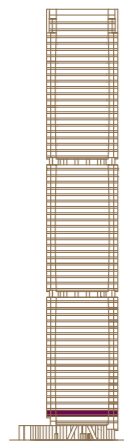
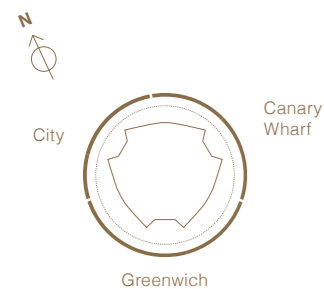
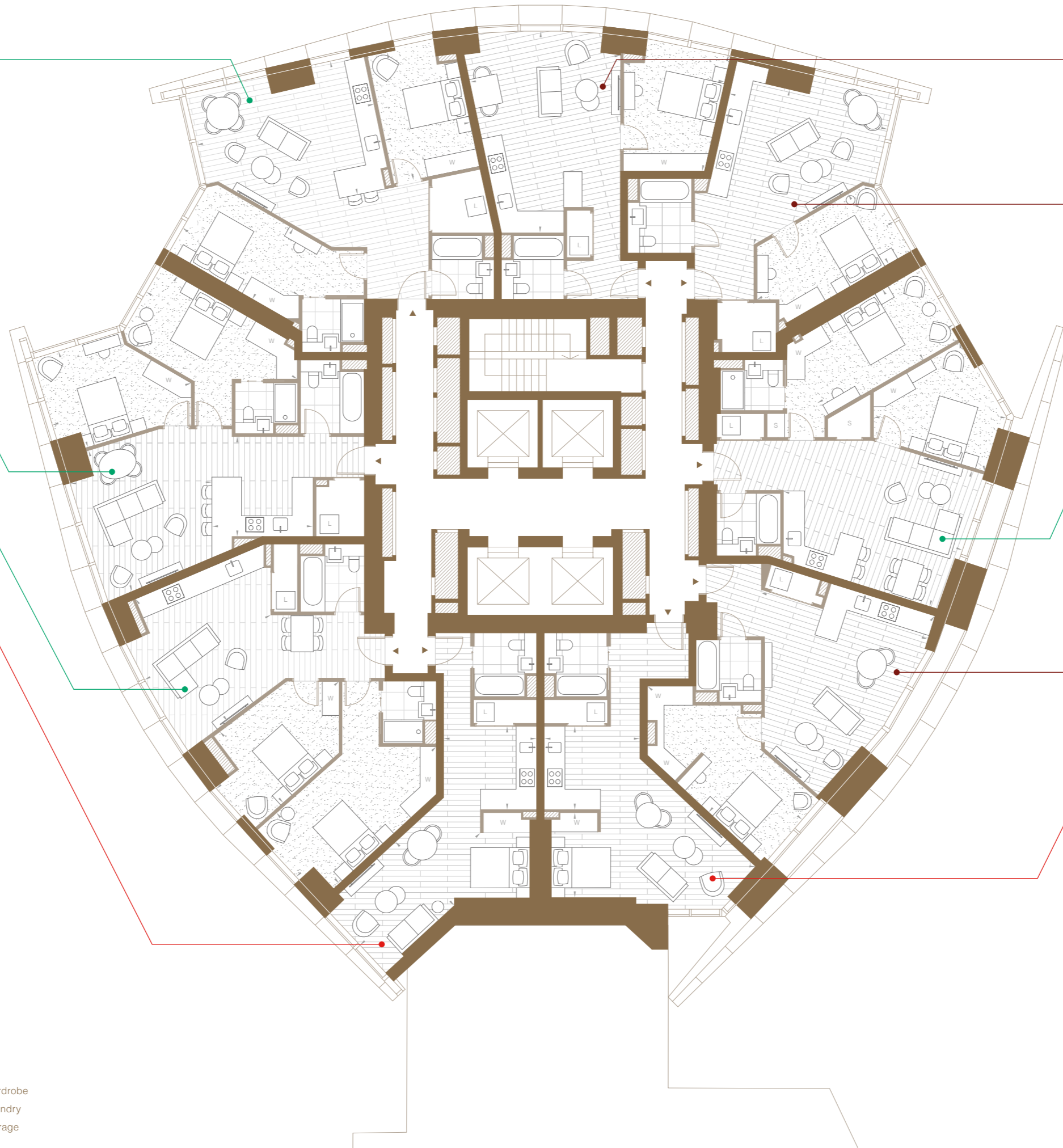
Total Internal Area 75.7 sq m / 814 sq ft
 Living/Dining/Kitchen 4775 x 6205 mm
 Bedroom 1 2750 x 5175 mm
 Bedroom 2 4430 x 4455 mm

1 BEDROOM / 02.04

Total Internal Area 56.6 sq m / 609 sq ft
 Living & Dining 7135 x 5705 mm
 Bedroom 2830 x 6680 mm

STUDIO / 02.05

Total Internal Area 42.9 sq m / 462 sq ft
 Living & Dining 6885 x 2875 mm
 Kitchen 3230 x 2800 mm



Legend
 W - Wardrobe
 L - Laundry
 S - Storage

02

2 BEDROOM / 03.09 – 14.09

Total Internal Area	79.1 sq m / 852 sq ft
Living & Dining	6120 x 4500 mm
Bedroom 1	2750 x 4500 mm
Bedroom 2	4400 x 2940 mm

2 BEDROOM / 03.08 – 14.08

Total Internal Area	78.6 sq m / 846 sq ft
Living & Dining	5000 x 4790 mm
Kitchen	3375 x 3400 mm
Bedroom 1	2785 x 5865 mm
Bedroom 2	3380 x 4895 mm

2 BEDROOM / 03.07 – 14.07

Total Internal Area	76.9 sq m / 828 sq ft
Living & Dining	5180 x 4775 mm
Bedroom 1	3180 x 6440 mm
Bedroom 2	3230 x 5485 mm

STUDIO / 03.06 – 14.06

Total Internal Area	40 sq m / 430 sq ft
Living & Dining	2925 x 5525 mm
Kitchen	3145 x 2800 mm

1 BEDROOM / 03.01 – 14.01

Total Internal Area	54.4 sq m / 585 sq ft
Living & Dining	5155 x 6775 mm
Bedroom	3475 x 3970 mm

1 BEDROOM / 03.02 – 14.02

Total Internal Area	54.1 sq m / 582 sq ft
Living & Dining	5450 x 5365 mm
Bedroom	2770 x 5300 mm

2 BEDROOM / 03.03 – 14.03

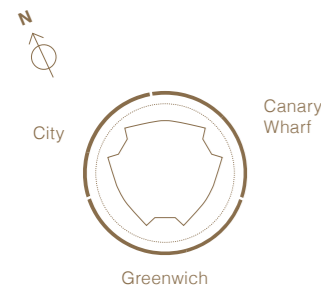
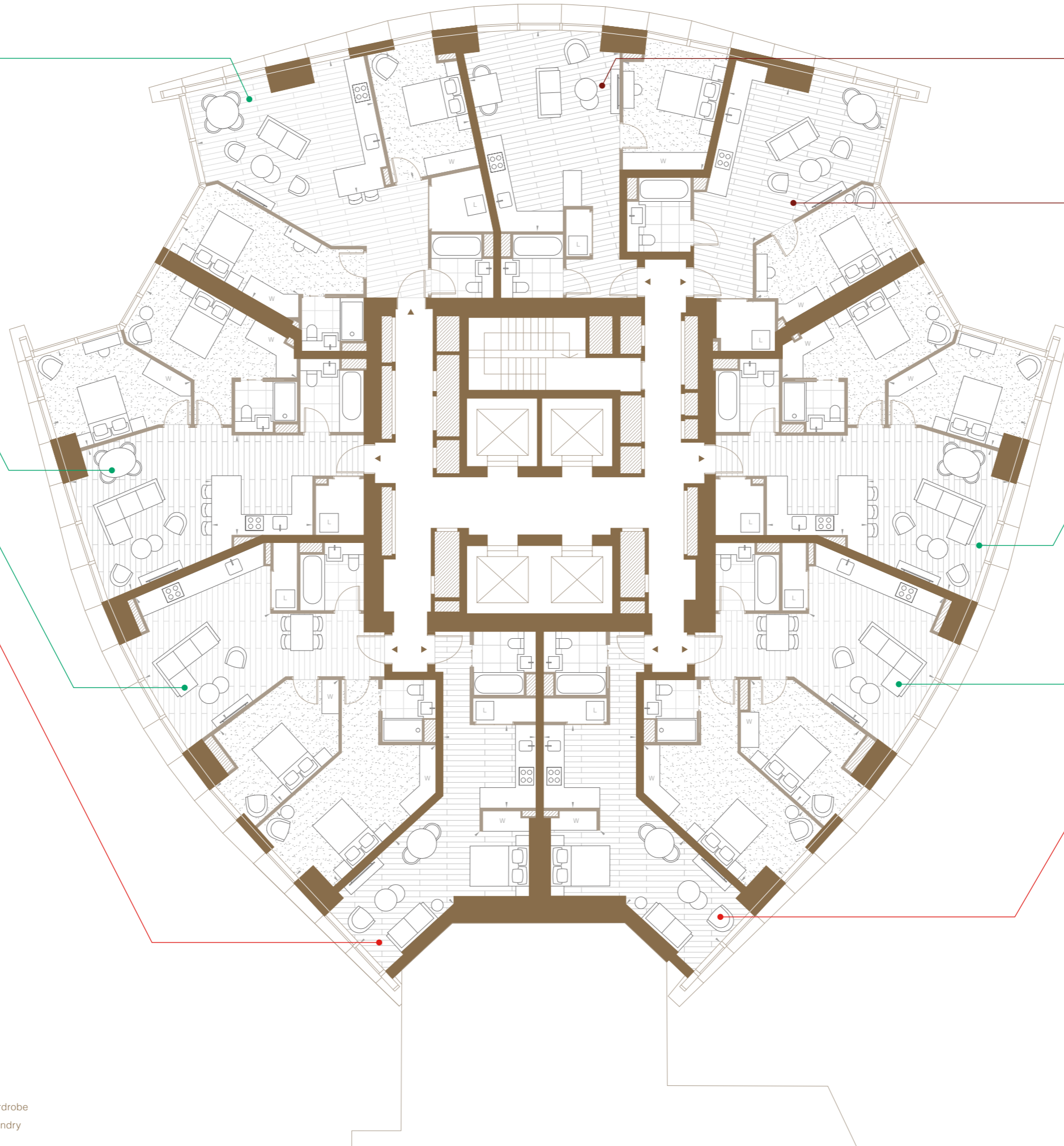
Total Internal Area	78.6 sq m / 846 sq ft
Living & Dining	4905 x 4790 mm
Kitchen	3375 x 3400 mm
Bedroom 1	2745 x 5870 mm
Bedroom 2	3380 x 4895 mm

2 BEDROOM / 03.04 – 14.04

Total Internal Area	76.7 sq m / 825 sq ft
Living & Dining	5175 x 4775 mm
Bedroom 1	3195 x 6430 mm
Bedroom 2	3225 x 5245 mm

STUDIO / 03.05 – 14.05

Total Internal Area	39.9 sq m / 429 sq ft
Living & Dining	2910 x 5525 mm
Kitchen	3150 x 2800 mm



Legend
 W – Wardrobe
 L – Laundry

03-14

2 BEDROOM / 15.09 — 20.09

Total Internal Area	79.1 sq m / 852 sq ft
Living & Dining	6120 x 4500 mm
Bedroom 1	2750 x 4500 mm
Bedroom 2	4400 x 2940 mm

2 BEDROOM / 15.08 — 20.08

Total Internal Area	78.6 sq m / 846 sq ft
Living & Dining	5000 x 4790 mm
Kitchen	3375 x 3400 mm
Bedroom 1	2785 x 5865 mm
Bedroom 2	3380 x 4895 mm

2 BEDROOM / 15.07 — 20.07

Total Internal Area	76.9 sq m / 828 sq ft
Living/Dining/Kitchen	5180 x 4775 mm
Bedroom 1	3180 x 6440 mm
Bedroom 2	3230 x 5485 mm

STUDIO / 15.06 — 20.06

Total Internal Area	39.6 sq m / 426 sq ft
Living & Dining	2925 x 5410 mm
Kitchen	2995 x 2800 mm

1 BEDROOM / 15.01 — 20.01

Total Internal Area	54.4 sq m / 585 sq ft
Living & Dining	5155 x 6775 mm
Bedroom	3475 x 3970 mm

1 BEDROOM / 15.02 — 20.02

Total Internal Area	54.1 sq m / 582 sq ft
Living & Dining	5450 x 5365 mm
Bedroom	2770 x 5300 mm

2 BEDROOM / 15.03 — 20.03

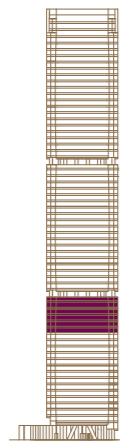
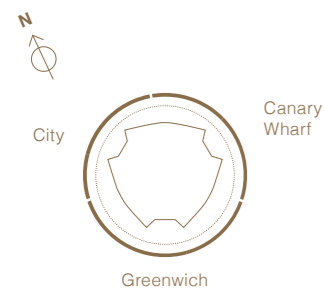
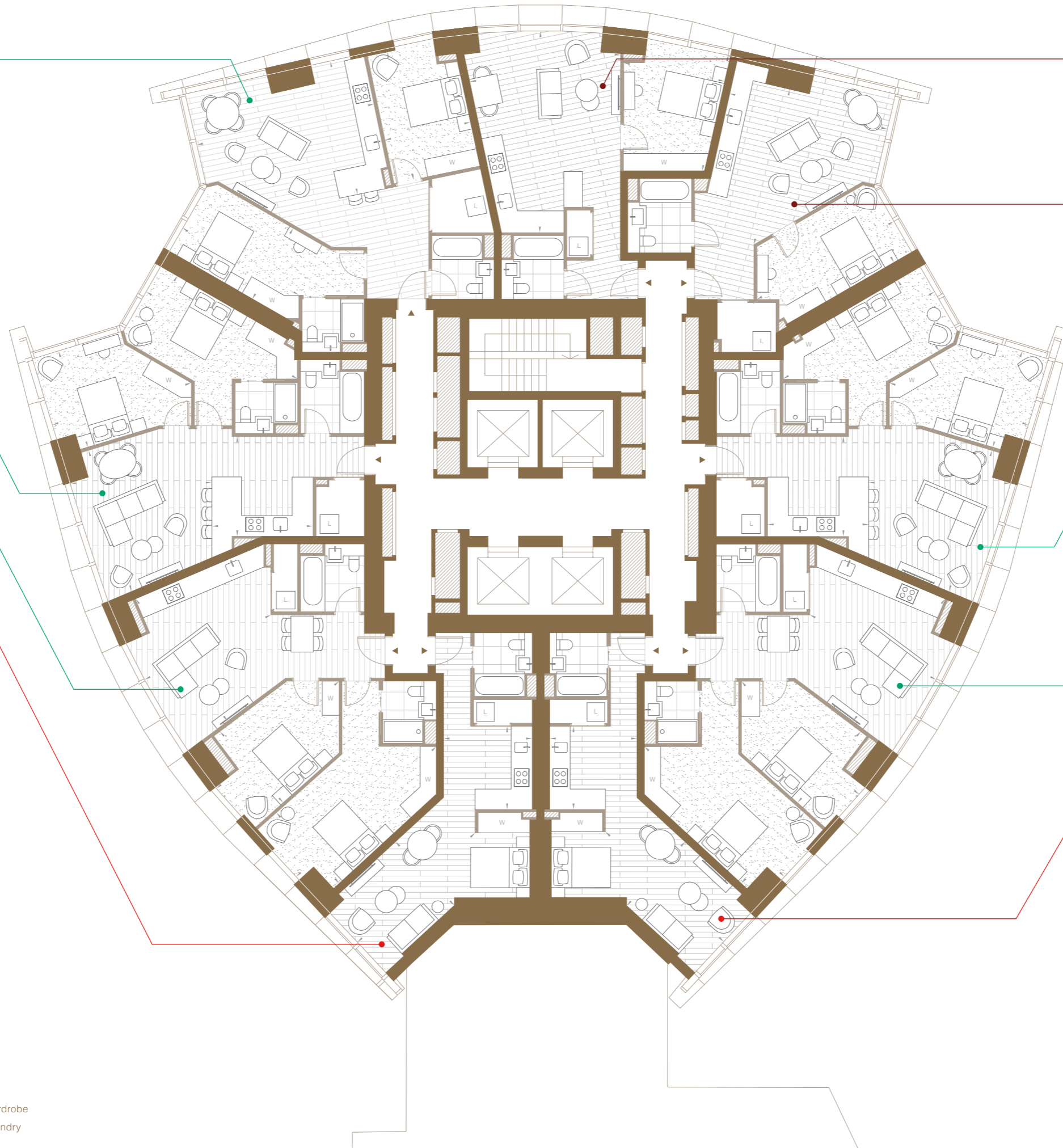
Total Internal Area	78.6 sq m / 846 sq ft
Living & Dining	4905 x 4790 mm
Kitchen	3375 x 3400 mm
Bedroom 1	2745 x 5870 mm
Bedroom 2	3380 x 4895 mm

2 BEDROOM / 15.04 — 20.04

Total Internal Area	76.7 sq m / 825 sq ft
Living & Dining	5175 x 4775 mm
Bedroom 1	3195 x 6430 mm
Bedroom 2	3225 x 5245 mm

STUDIO / 15.05 — 20.05

Total Internal Area	39.4 sq m / 424 sq ft
Living & Dining	2910 x 5410 mm
Kitchen	2960 x 2800 mm



Legend
 W - Wardrobe
 L - Laundry

15-20

2 BEDROOM / 23.09

Total Internal Area	80 sq m / 861 sq ft
Living & Dining	6120 x 4500 mm
Bedroom 1	2770 x 4500 mm
Bedroom 2	2940 x 4405 mm

2 BEDROOM / 23.08

Total Internal Area	79.2 sq m / 853 sq ft
Living & Dining	5015 x 4795 mm
Kitchen	3375 x 3400 mm
Bedroom 1	2760 x 5875 mm
Bedroom 2	3380 x 4895 mm

STUDIO / 23.07

Total Internal Area	42.1 sq m / 453 sq ft
Living & Dining	7455 x 6130 mm

2 BEDROOM / 23.06

Total Internal Area	80 sq m / 861 sq ft
Living & Dining	4945 x 5680 mm
Bedroom 1	3355 x 5380 mm
Bedroom 2	4205 x 3165 mm
Terrace	28.4 sq m / 306 sq ft

1 BEDROOM / 23.01

Total Internal Area	54.7 sq m / 589 sq ft
Living & Dining	5165 x 6775 mm
Bedroom	3485 x 3970 mm

1 BEDROOM / 23.02

Total Internal Area	54.6 sq m / 588 sq ft
Living & Dining	5450 x 5415 mm
Bedroom	2755 x 5340 mm

2 BEDROOM / 23.03

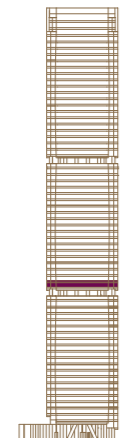
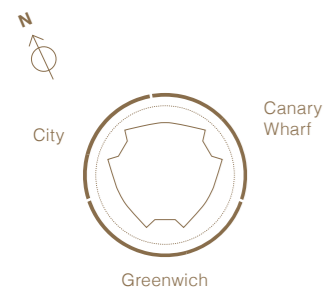
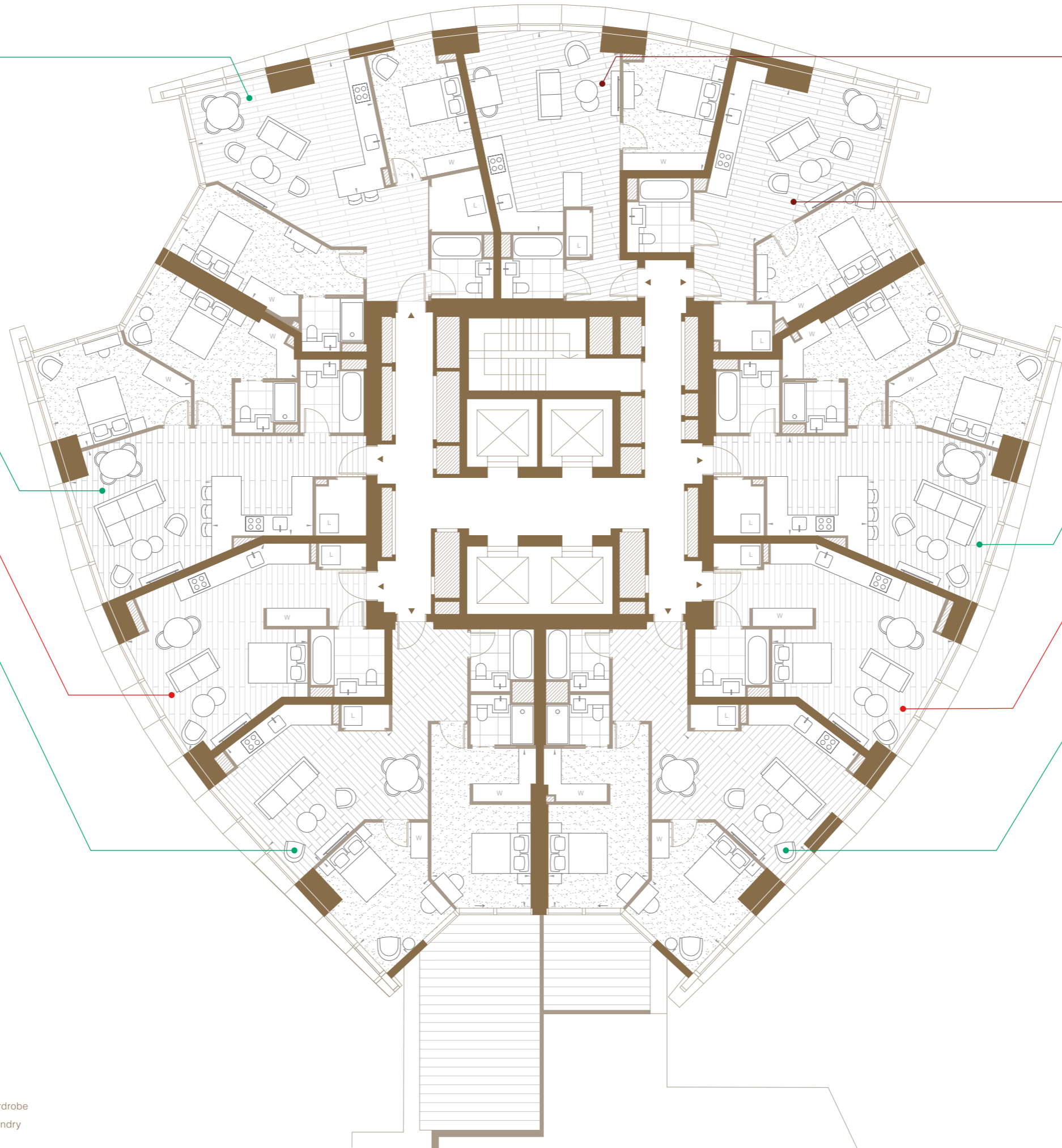
Total Internal Area	79.3 sq m / 854 sq ft
Living & Dining	4985 x 4795 mm
Kitchen	3380 x 3400 mm
Bedroom 1	2760 x 5875 mm
Bedroom 2	3380 x 4890 mm

STUDIO / 23.04

Total Internal Area	42 sq m / 452 sq ft
Living & Dining	7455 x 6130 mm

2 BEDROOM / 23.05

Total Internal Area	79.8 sq m / 859 sq ft
Living & Dining	4945 x 5680 mm
Bedroom 1	3390 x 5380 mm
Bedroom 2	4205 x 3165 mm
Terrace	10.9 sq m / 117 sq ft



Legend
 W - Wardrobe
 L - Laundry

23

2 BEDROOM / 24.09 — 31.09

Total Internal Area	80 sq m / 861 sq ft
Living & Dining	6120 x 4500 mm
Bedroom 1	2770 x 4500 mm
Bedroom 2	2940 x 4405 mm

2 BEDROOM / 24.08 — 31.08

Total Internal Area	79.2 sq m / 853 sq ft
Living & Dining	5015 x 4795 mm
Kitchen	3375 x 3400 mm
Bedroom 1	2760 x 5875 mm
Bedroom 2	3380 x 4895 mm

STUDIO / 24.07 — 31.07

Total Internal Area	42.1 sq m / 453 sq ft
Living & Dining	7455 x 6130 mm

2 BEDROOM / 24.06 — 31.06

Total Internal Area	80 sq m / 861 sq ft
Living & Dining	4925 x 5685 mm
Bedroom 1	3355 x 5380 mm
Bedroom 2	4205 x 3165 mm

1 BEDROOM / 24.01 — 31.01

Total Internal Area	54.7 sq m / 589 sq ft
Living & Dining	5165 x 6775 mm
Bedroom	3485 x 3970 mm

1 BEDROOM / 24.02 — 31.02

Total Internal Area	54.6 sq m / 588 sq ft
Living & Dining	5450 x 5415 mm
Bedroom	2755 x 5340 mm

2 BEDROOM / 24.03 — 31.03

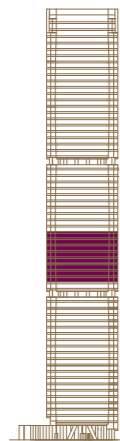
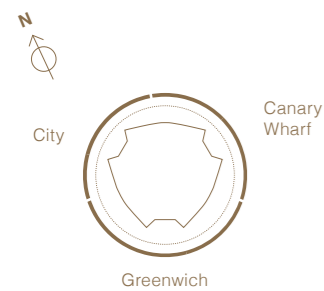
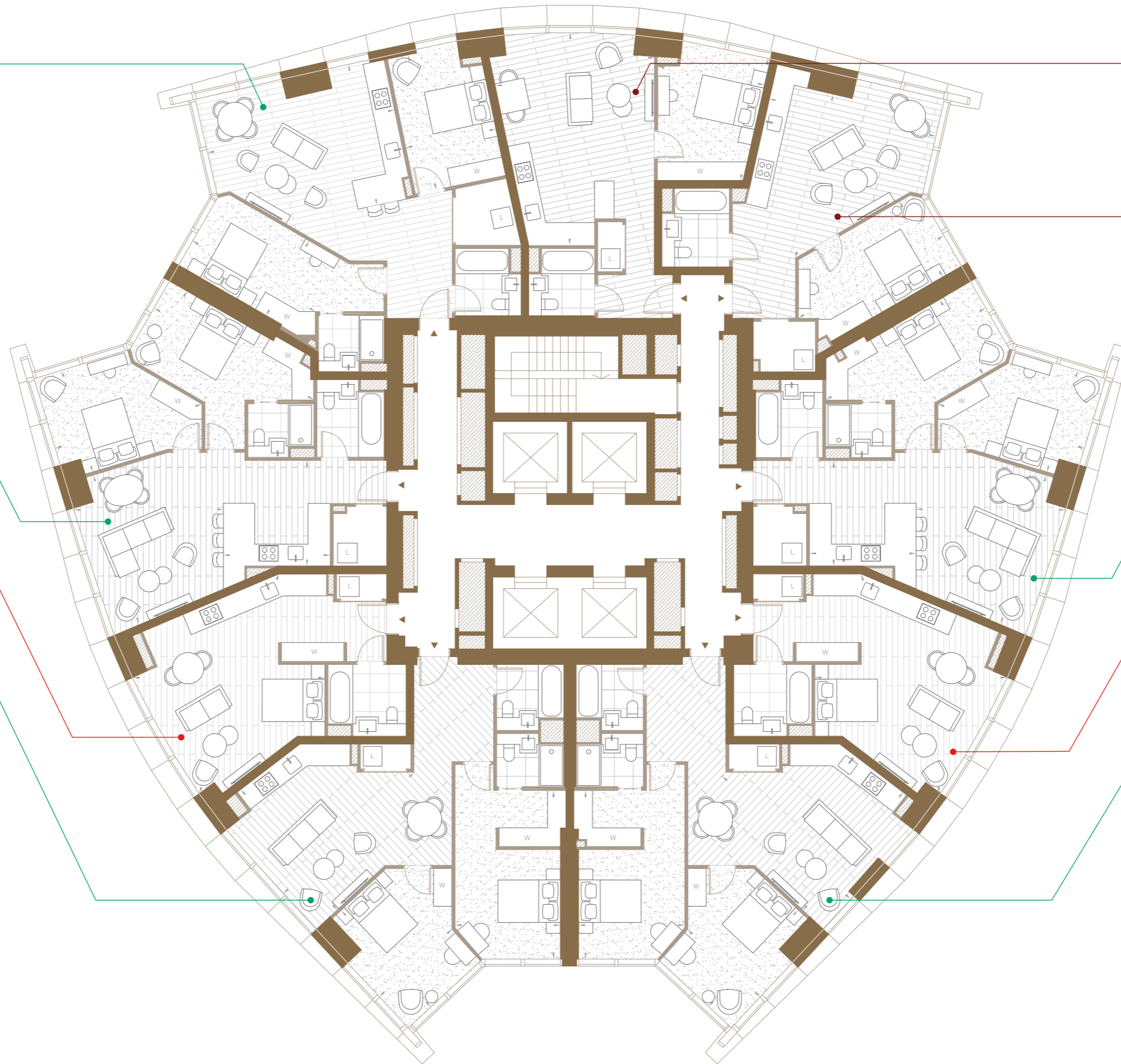
Total Internal Area	79.3 sq m / 854 sq ft
Living & Dining	4985 x 4795 mm
Kitchen	3380 x 3400 mm
Bedroom 1	2760 x 5875 mm
Bedroom 2	3380 x 4890 mm

STUDIO / 24.04 — 31.04

Total Internal Area	42 sq m / 452 sq ft
Living & Dining	7455 x 6130 mm

2 BEDROOM / 24.05 — 31.05

Total Internal Area	79.8 sq m / 859 sq ft
Living & Dining	4945 x 5680 mm
Bedroom 1	3390 x 5380 mm
Bedroom 2	4205 x 3165 mm



Legend
 W - Wardrobe
 L - Laundry

24-31

2 BEDROOM / 32.07 — 33.07

Total Internal Area	79.2 sq m / 853 sq ft
Living & Dining	5015 x 4795 mm
Kitchen	3375 x 3400 mm
Bedroom 1	2760 x 5875 mm
Bedroom 2	3380 x 4895 mm

STUDIO / 32.06 — 33.06

Total Internal Area	42.1 sq m / 453 sq ft
Living & Dining	7455 x 6130 mm

2 BEDROOM / 32.05 — 33.05

Total Internal Area	80 sq m / 861 sq ft
Living & Dining	4925 x 5685 mm
Bedroom 1	3355 x 5380 mm
Bedroom 2	4205 x 3165 mm

1 BEDROOM / 32.01 — 33.01

Total Internal Area	57.6 sq m / 620 sq ft
Living & Dining	5440 x 5460 mm
Bedroom	2800 x 5360 mm

2 BEDROOM / 32.02 — 33.02

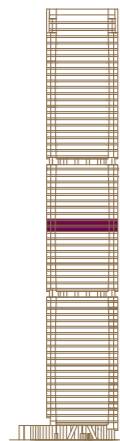
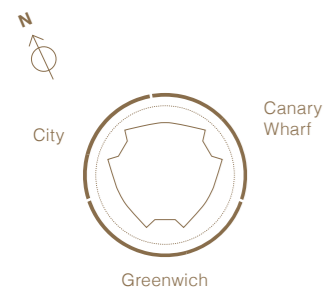
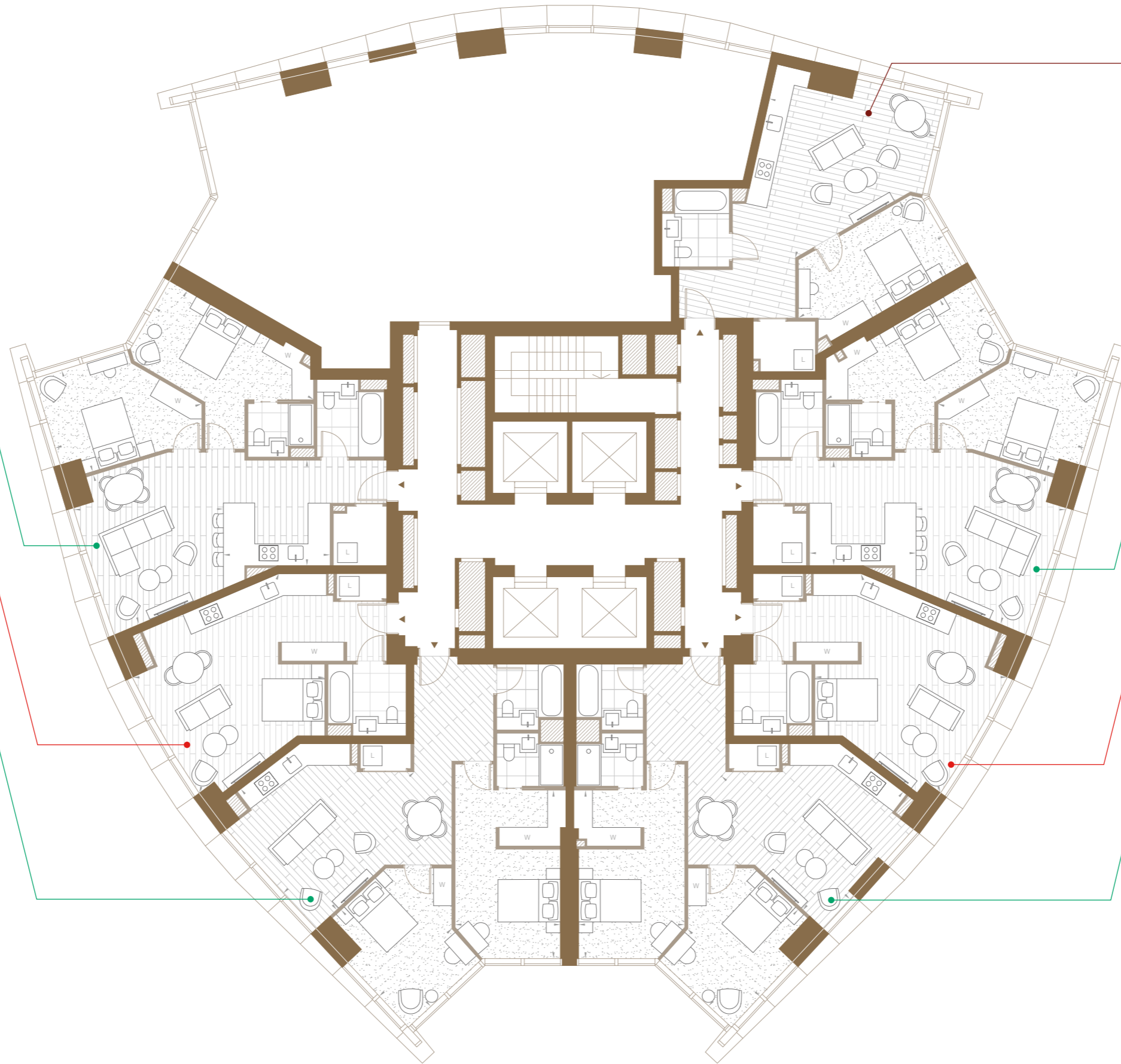
Total Internal Area	79.3 sq m / 854 sq ft
Living & Dining	4985 x 4795 mm
Kitchen	3380 x 3400 mm
Bedroom 1	2760 x 5875 mm
Bedroom 2	3380 x 4890 mm

STUDIO / 32.03 — 33.03

Total Internal Area	42 sq m / 452 sq ft
Living & Dining	7455 x 6130 mm

2 BEDROOM / 32.04 — 33.04

Total Internal Area	79.8 sq m / 859 sq ft
Living & Dining	4945 x 5680 mm
Bedroom 1	3390 x 5380 mm
Bedroom 2	4205 x 3165 mm



Legend
 W - Wardrobe
 L - Laundry

32-33

2 BEDROOM / 34.08 — 39.08

Total Internal Area	80 sq m / 861 sq ft
Living & Dining	6120 x 4500 mm
Bedroom 1	2770 x 4500 mm
Bedroom 2	2940 x 4405 mm

2 BEDROOM / 34.07 — 39.07

Total Internal Area	102.7 sq m / 1105 sq ft
Living & Dining	8885 x 5680 mm
Bedroom 1	3245 x 6540 mm
Bedroom 2	2910 x 6120 mm

2 BEDROOM / 34.06 — 39.06

Total Internal Area	106.8 sq m / 1150 sq ft
Living & Dining	8615 x 6950 mm
Bedroom 1	3270 x 5040 mm
Bedroom 2	3000 x 6775 mm

1 BEDROOM / 34.01 — 39.01

Total Internal Area	54.7 sq m / 589 sq ft
Living & Dining	5165 x 6775 mm
Bedroom	3485 x 3970 mm

1 BEDROOM / 34.02 — 39.02

Total Internal Area	54.6 sq m / 588 sq ft
Living & Dining	5450 x 5415 mm
Bedroom	2755 x 5340 mm

2 BEDROOM / 34.03 — 39.03

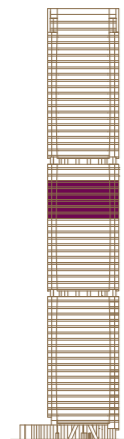
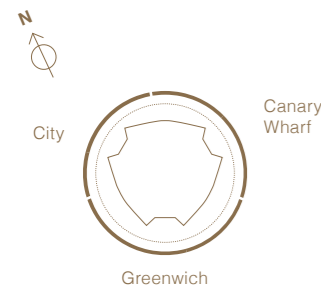
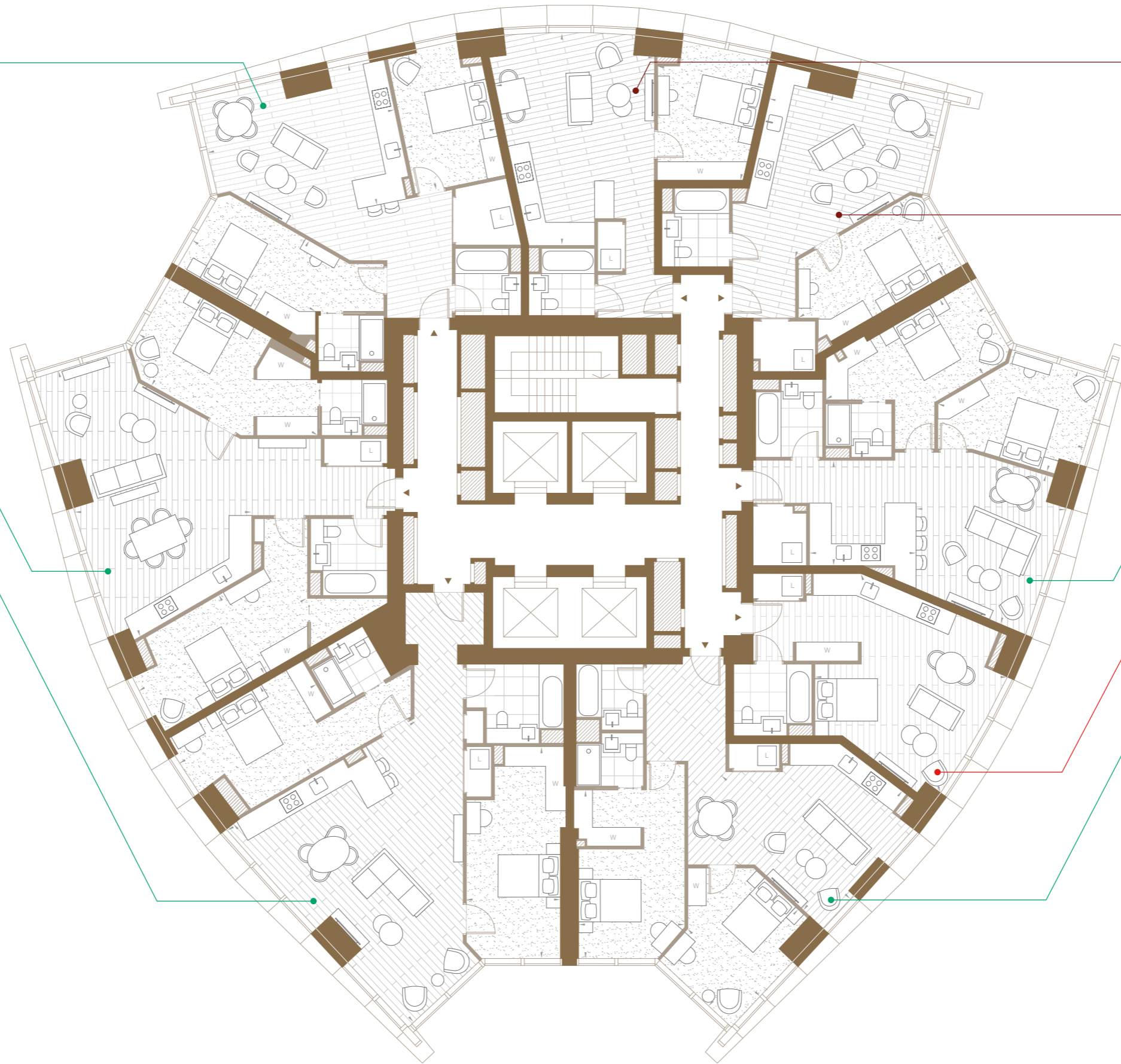
Total Internal Area	79.3 sq m / 854 sq ft
Living & Dining	4985 x 4795 mm
Kitchen	3380 x 3400 mm
Bedroom 1	2760 x 5875 mm
Bedroom 2	3380 x 4890 mm

STUDIO / 34.04 — 39.04

Total Internal Area	42 sq m / 452 sq ft
Living & Dining	7455 x 6130 mm

2 BEDROOM / 34.05 — 39.05

Total Internal Area	79.8 sq m / 859 sq ft
Living & Dining	4945 x 5680 mm
Bedroom 1	3390 x 5380 mm
Bedroom 2	4205 x 3165 mm



Legend
 W - Wardrobe
 L - Laundry

34-39

2 BEDROOM / 40.08 — 41.08

Total Internal Area	80 sq m / 861 sq ft
Living & Dining	6120 x 4500 mm
Bedroom 1	2770 x 4500 mm
Bedroom 2	2940 x 4405 mm

2 BEDROOM / 40.07 — 41.07

Total Internal Area	102.7 sq m / 1105 sq ft
Living & Dining	8885 x 5680 mm
Bedroom 1	3245 x 6540 mm
Bedroom 2	2910 x 6120 mm

2 BEDROOM / 40.06 — 41.06

Total Internal Area	106.2 sq m / 1143 sq ft
Living & Dining	8615 x 6950 mm
Bedroom 1	3270 x 5040 mm
Bedroom 2	3000 x 6775 mm

1 BEDROOM / 40.01 — 41.01

Total Internal Area	54.7 sq m / 589 sq ft
Living & Dining	5165 x 6775 mm
Bedroom	3485 x 3970 mm

1 BEDROOM / 40.02 — 41.02

Total Internal Area	54.6 sq m / 588 sq ft
Living & Dining	5450 x 5415 mm
Bedroom	2755 x 5340 mm

2 BEDROOM / 40.03 — 41.03

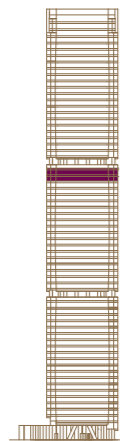
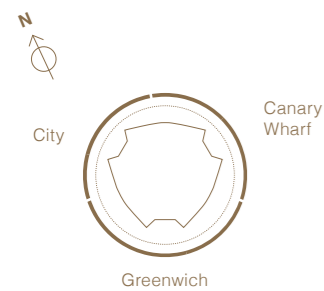
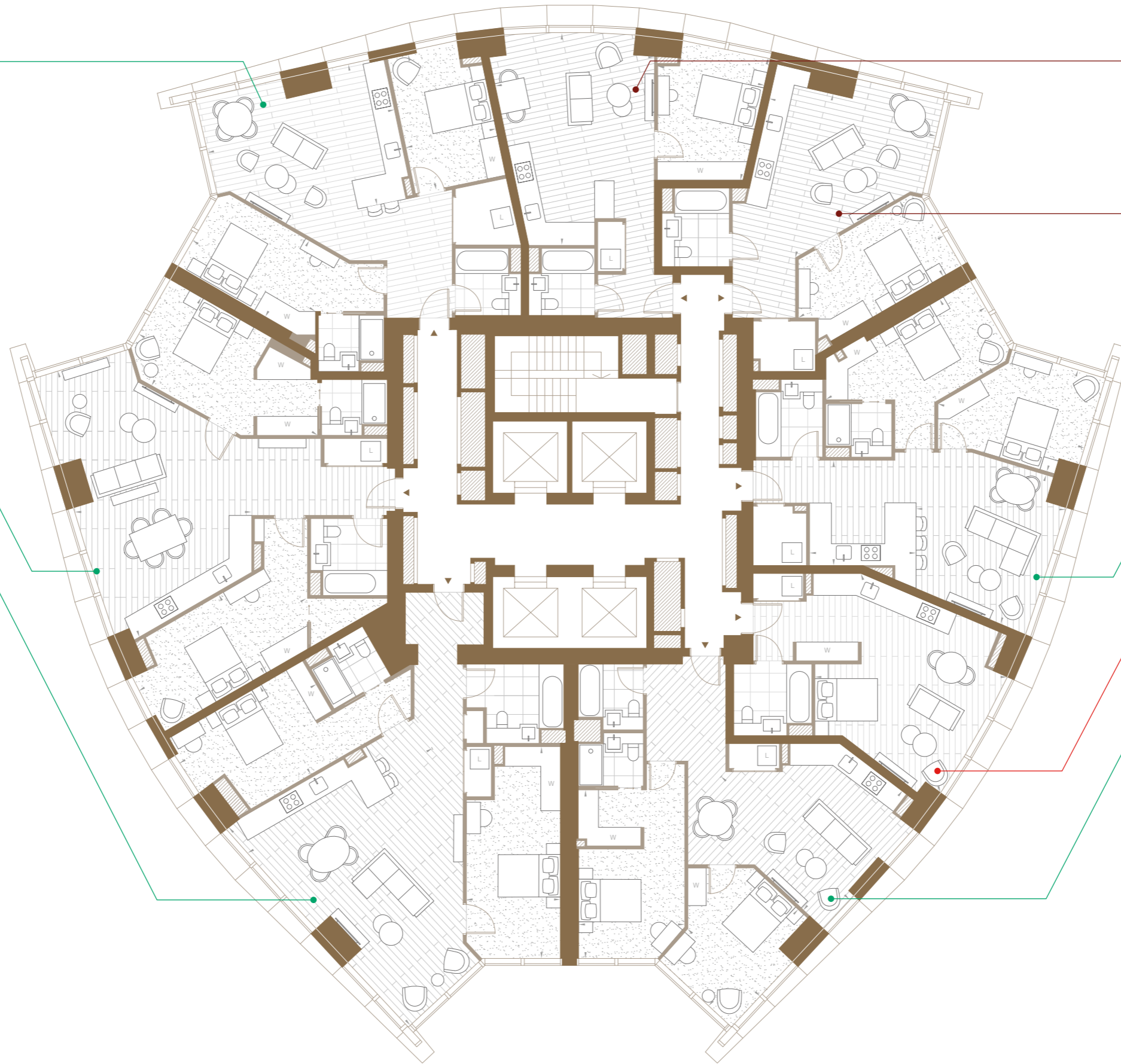
Total Internal Area	79.3 sq m / 854 sq ft
Living & Dining	4985 x 4795 mm
Kitchen	3380 x 3400 mm
Bedroom 1	2760 x 5875 mm
Bedroom 2	3330 x 4890 mm

STUDIO / 40.04 — 41.04

Total Internal Area	42 sq m / 452 sq ft
Living & Dining	7455 x 6130 mm

2 BEDROOM / 40.05 — 41.05

Total Internal Area	79.6 sq m / 857 sq ft
Living & Dining	4945 x 5680 mm
Bedroom 1	3390 x 5380 mm
Bedroom 2	4205 x 3165 mm



Legend
 W - Wardrobe
 L - Laundry

40-41

3 BEDROOM / 42.05

Total Internal Area	96.1 sq m / 1034 sq ft
Living & Dining	6035 x 7800 mm
Bedroom 1	3440 x 3730 mm
Bedroom 2	4845 x 3525 mm
Bedroom 3	2610 x 4140 mm
Terrace	32.8 sq m / 353 sq ft

2 BEDROOM / 42.04

Total Internal Area	80.8 sq m / 870 sq ft
Living & Dining	4865 x 5510 mm
Bedroom 1	3900 x 5885 mm
Bedroom 2	4400 x 3725 mm
Terrace	9.6 sq m / 104 sq ft

3 BEDROOM / 42.01

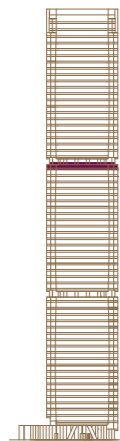
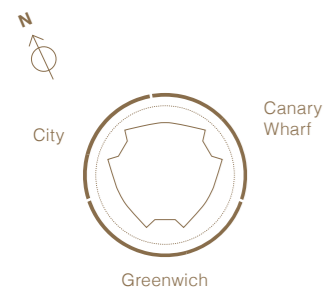
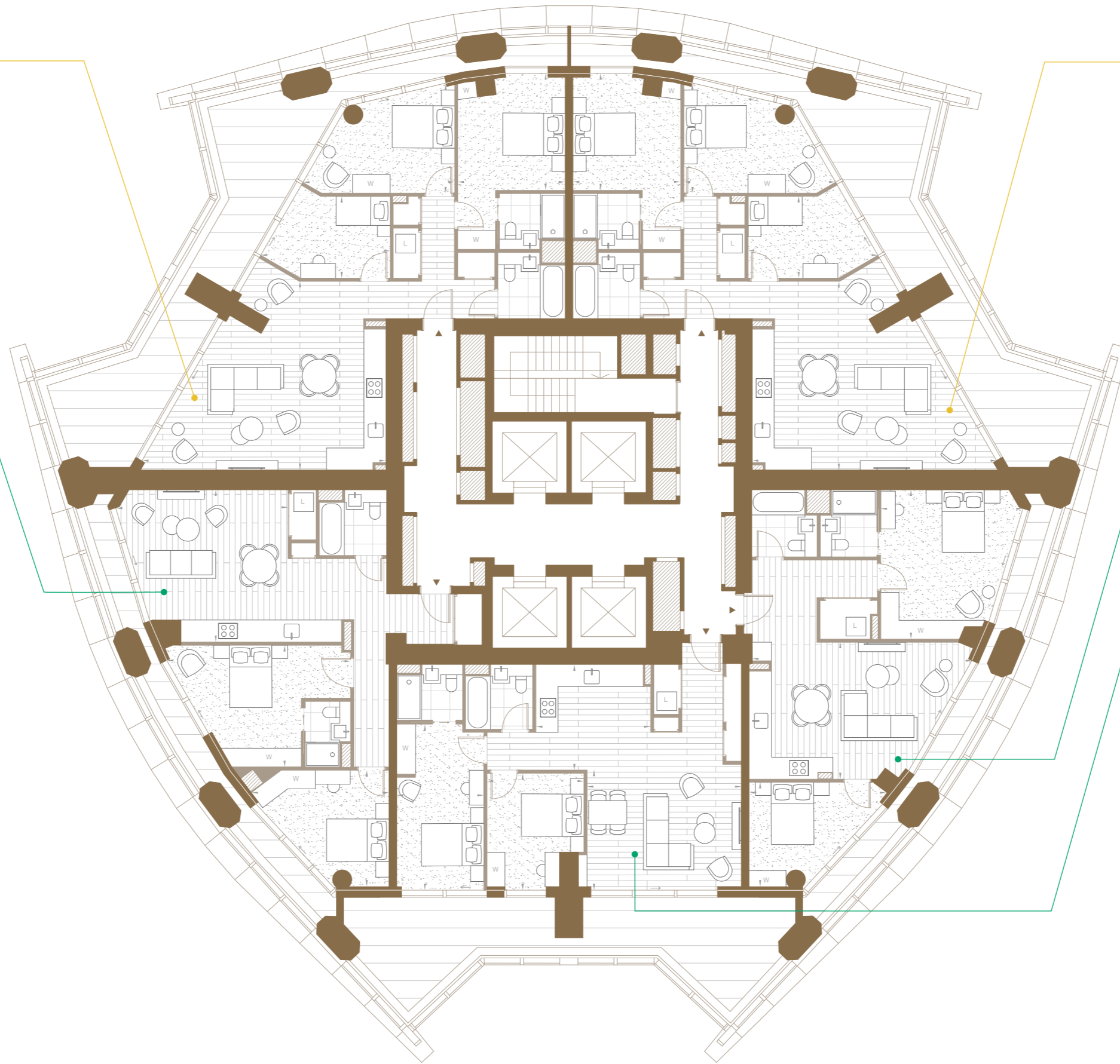
Total Internal Area	96.1 sq m / 1034 sq ft
Living & Dining	6035 x 7805 mm
Bedroom 1	3440 x 3730 mm
Bedroom 2	4850 x 3525 mm
Bedroom 3	2610 x 4140 mm
Terrace	32.8 sq m / 353 sq ft

2 BEDROOM / 42.02

Total Internal Area	77.2 sq m / 831 sq ft
Living & Dining	4375 x 7015 mm
Bedroom 1	4770 x 4530 mm
Bedroom 2	4405 x 3340 mm
Terrace	9.6 sq m / 104 sq ft

2 BEDROOM / 42.03

Total Internal Area	79.5 sq m / 856 sq ft
Living & Dining	4925 x 3840 mm
Kitchen	3665 x 3380 mm
Bedroom 1	2780 x 5305 mm
Bedroom 2	3100 x 3740 mm
Terrace	30.3 sq m / 326 sq ft



Legend
 W - Wardrobe
 L - Laundry

42

3 BEDROOM / 43.05

Total Internal Area	96.4 sq m / 1038 sq ft
Living & Dining	6035 x 7800 mm
Bedroom 1	3440 x 3730 mm
Bedroom 2	4845 x 3525 mm
Bedroom 3	2610 x 4140 mm

2 BEDROOM / 43.04

Total Internal Area	82.1 sq m / 884 sq ft
Living & Dining	4865 x 5510 mm
Bedroom 1	3900 x 5975 mm
Bedroom 2	4950 x 3725 mm

3 BEDROOM / 43.01

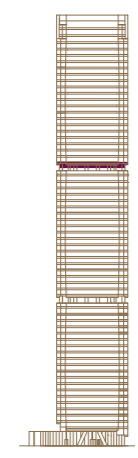
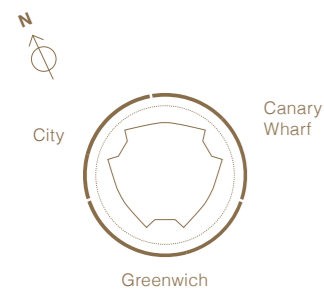
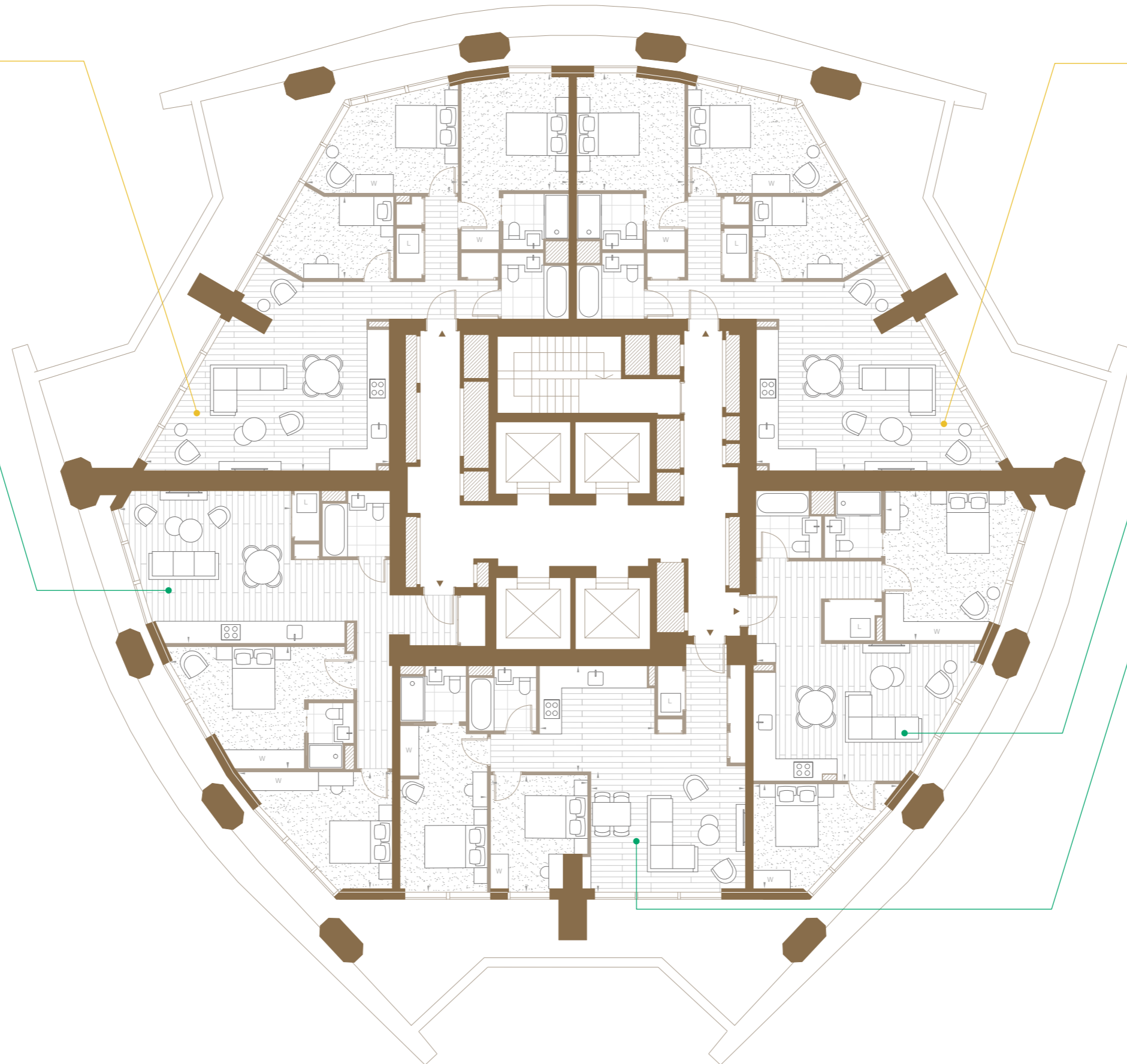
Total Internal Area	96.4 sq m / 1038 sq ft
Living & Dining	6035 x 7805 mm
Bedroom 1	3440 x 3730 mm
Bedroom 2	4850 x 3530 mm
Bedroom 3	2610 x 4140 mm

2 BEDROOM / 43.02

Total Internal Area	77.9 sq m / 838 sq ft
Living & Dining	4375 x 7015 mm
Bedroom 1	4770 x 4530 mm
Bedroom 2	4665 x 3340 mm

2 BEDROOM / 43.03

Total Internal Area	79.5 sq m / 856 sq ft
Living & Dining	4925 x 3840 mm
Kitchen	3665 x 3380 mm
Bedroom 1	2780 x 5305 mm
Bedroom 2	3100 x 3740 mm



Legend
 W - Wardrobe
 L - Laundry

43

2 BEDROOM / 44.08 — 62.08

Total Internal Area	80.3 sq m / 864 sq ft
Living & Dining	6120 x 4500 mm
Bedroom 1	2785 x 4500 mm
Bedroom 2	2945 x 4400 mm

3 BEDROOM / 44.07 — 62.07

Total Internal Area	102.2 sq m / 1100 sq ft
Living & Dining	4370 x 7455 mm
Bedroom 1	3000 x 7150 mm
Bedroom 2	3910 x 4630 mm
Bedroom 3	3225 x 5960 mm

3 BEDROOM / 44.06 — 62.06

Total Internal Area	108.8 sq m / 1172 sq ft
Living & Dining	4645 x 8330 mm
Bedroom 1	3000 x 5040 mm
Bedroom 2	3985 x 5040 mm
Bedroom 3	2650 x 4440 mm

1 BEDROOM / 44.01 — 62.01

Total Internal Area	55.3 sq m / 595 sq ft
Living & Dining	5175 x 6785 mm
Bedroom	3550 x 3970 mm

1 BEDROOM / 44.02 — 62.02

Total Internal Area	55.2 sq m / 594 sq ft
Living & Dining	5450 x 5505 mm
Bedroom	2805 x 5380 mm

2 BEDROOM / 44.03 — 62.03

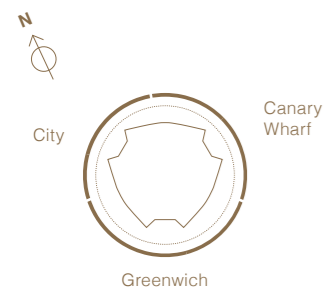
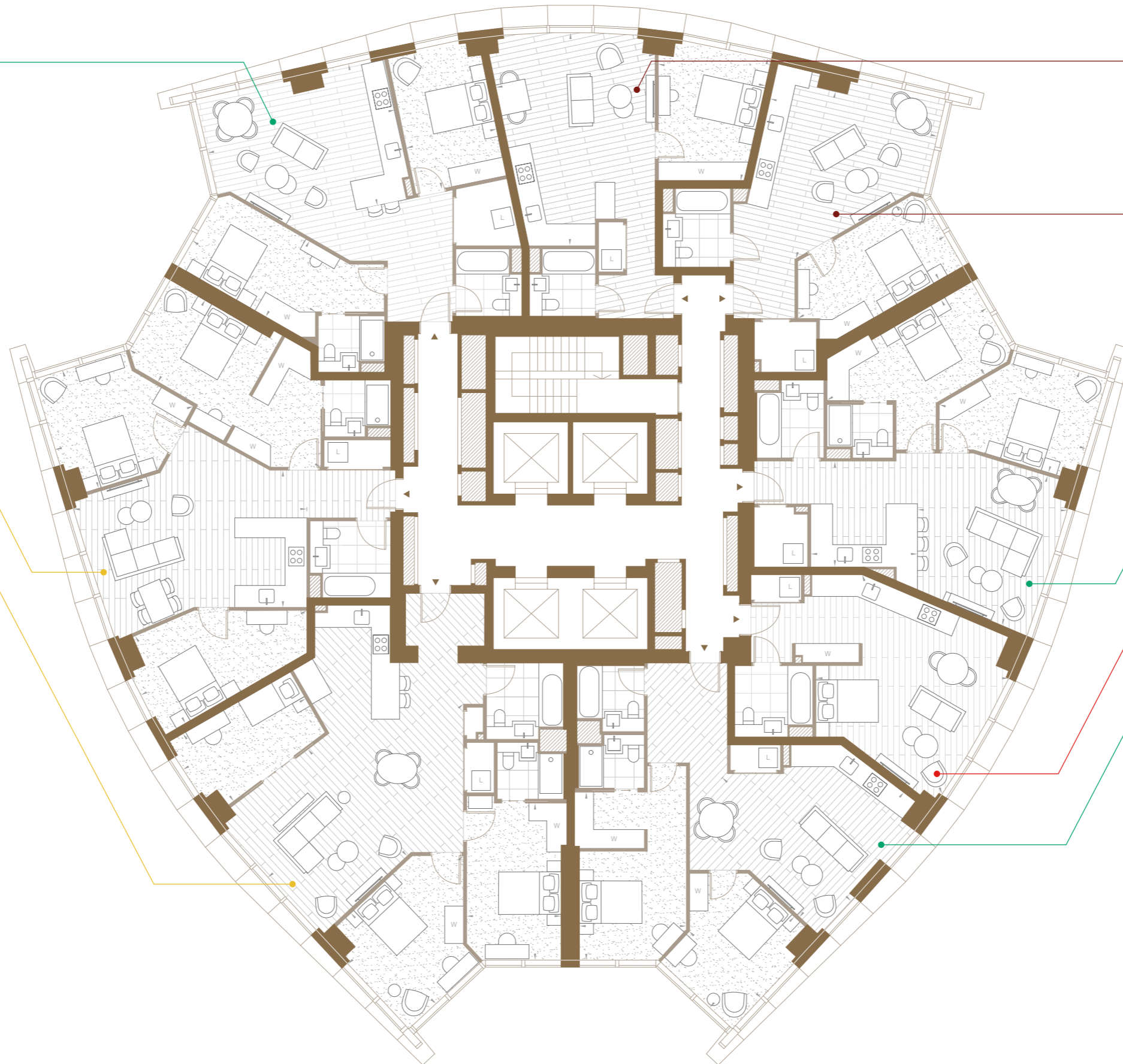
Total Internal Area	79.9 sq m / 860 sq ft
Living & Dining	5005 x 4800 mm
Kitchen	3365 x 3400 mm
Bedroom 1	2785 x 5875 mm
Bedroom 2	3380 x 4895 mm

STUDIO / 44.04 — 62.04

Total Internal Area	42.5 sq m / 457 sq ft
Living & Dining	7495 x 6170 mm

2 BEDROOM / 44.05 — 62.05

Total Internal Area	79.9 sq m / 860 sq ft
Living & Dining	5120 x 5680 mm
Bedroom 1	3420 x 5380 mm
Bedroom 2	3985 x 3115 mm



Legend
 W - Wardrobe
 L - Laundry

44-62



Drawing on
the past yet
looking to
the future.

SPECIFICATION

Inspired by beautiful riches and treasures that complement and contrast.

The rich textures and colours from the special commodities shipped to West India Docks during Victorian times, influence a variety of contemporary materials used to create calm yet vibrant layers throughout the apartments.

Leather was used to create everything from simple tools to the lining of the vessels. Seashells like the chambered nautilus, known for its beautiful, coiled protective casing, were collected for decoration.

Metal, glass and timber in Aspen's apartments are seen in the hardware and details, reflecting the structure of the warehouses built to service the importing and exporting of exotic produce from afar. Feature joinery use the language of the vertical lines to reference the vernacular language of the architecture of the building. Hints of indigo blue, cardamom green and orange are inspired by the exotic cargo, while the industrial history of the area is further interpreted through the use of contrasting dark metal details and brassware.

The kitchen palette is simple and tonal, giving opportunity for warmth and comfort with complementary timbers and contrasting brassware. The use of copper bronze accents gives the space a feeling of opulence and is an additional point of interest. The concave and convex nature of the building creates geometric shapes, which provide interest through pattern and detail.

APARTMENT SPECIFICATION

GENERAL

- Interior Design by renowned Hirsch Bedner Associates and HBA Residential
- Open plan living designed to optimise views
- Openable windows to habitable rooms

INTERIOR FINISHES

- Bespoke veneer entrance door with anthracite ironmongery
- Engineered wood flooring to kitchen and living spaces
- Bespoke internal doors with anthracite ironmongery
- Neutral paint palette to walls throughout

KITCHEN/LIVING ROOM

- Bespoke designer kitchen
- Custom-designed compartmentalised cupboard units with copper bronze tone trims
- Feature copper bronze tone cooker hood with integrated recirculation extractor fan
- Engineered marble stone worktop, splash-back and feature shelf
- Under-mounted sink with anthracite mixer tap
- Concealed LED lighting beneath wall mounted units
- Siemens integrated oven
- Siemens integrated microwave (three-bedroom apartments only)
- Siemens induction hob
- Siemens integrated multifunction dishwasher
- Siemens integrated frost-free fridge freezer
- Integrated refuse and recycling bins

MASTER BATHROOM AND EN-SUITE

- Porcelain tiles to floor and walls with textured feature tiled wall
- Bespoke marble effect vanity unit with anthracite mixer tap and copper bronze tone towel rail
- Wall-mounted WC with concealed cistern with dual flush
- Mirrored storage cabinet with anti-mist, shaver socket and feature lighting
- Bath with integrated bath filler and separate hand shower (Master Bathroom)
- Walk-in shower with overhead shower and separate hand shower (Ensuite)
- Anthracite edged shower/bath screen
- Anthracite wall mounted heated towel rail
- Anthracite toilet roll holder & hook

BEDROOMS

- Bespoke built-in wardrobes to master and second bedroom
- Broadloom carpet

UTILITY CUPBOARD

- Washing machine/dryer
- Cooling and heating interface unit
- Consumer unit
- Storage

ELECTRICS, HEATING AND COOLING

- Energy efficient lighting throughout
- Anthracite switches and sockets
- Heating and cooling provided by FCU with easy and responsive control system
- Underfloor heating to bathrooms
- Individually metered systems provide heating and hot water from a centralised energy centre
- Heat/smoke detectors to all apartments

IT/AV

- Satellite, terrestrial TV and telephone connections
- High speed fibre optic connection into each apartment

ADAPTABILITY

- Some apartments are wheelchair adaptable, details on request

WARRANTY

- All apartments are covered by building guarantee insurance

MANAGEMENT AND SECURITY

- 24/7 Concierge Service
- CCTV coverage to external entrances and communal areas
- Video entry system connected to Concierge
- Electronic Access control system
- Cycle storage with secure access



A development by



FEC Development Management Limited is appointed development manager of 50 Marsh Wall, 63-69, 68-70 Manilla Street, Isle of the Dogs, E14 9TP by the owner DRAKAR LIMITED (an FEC company incorporated in the Isle of Man with registered number 127355C), whose registered office is at Clinch's House, Lord Street, Douglas, IM99 1RZ, Isle of Man and trading address is at Ground Floor, 12 Stanhope Gate, London, W1K 1AW, England. DRAKAR LIMITED reserves the right to amend any of the specifications at any time at its absolute discretion as necessary and without any notice. DRAKAR LIMITED assumes no responsibility and shall not be liable to any person for any loss, damage or expense caused by reliance on the information in this brochure. Whilst reasonable efforts have been made to ensure that the information in this brochure is correct, it is designed specifically as a broad indicative guide only and accuracy cannot be guaranteed and no representation or warranty is made in that regard. This brochure and the information contained in it does not in any way constitute or form any part of a contract for sale, transfer or lease nor does it constitute a representation or otherwise form the basis of a contract. Photos, computer-generated images (CGIs), drawings and perspectives contained in this brochure may not relate to the development, are indicative only (and in particular some photography may be taken from similar Far East Consortium developments). Local maps and Artist illustrations of the site are not to scale, landscaping, gradients and street furniture may differ to what is shown and should not be relied upon as depicting the final as built development or apartment. All sales remain subject to contract. Designs and layouts of the development and apartments are indicative only and may change. The specification of the apartments is the anticipated specification at the date this brochure was prepared, but may be subject to change. Dimensions shown are approximate sizes only and actual sizes may be different once constructed. Contract specifications and dimensions may also be changed in accordance with permitted variances under the apartment sale contracts, although it is not anticipated that overall apartment sizes will vary by more than 5%. Furniture, wallcoverings, floor coverings, feature lighting and other fixtures shown in the CGIs and photographs are not included in sales and may differ. Consort Place and building names are marketing names only and will not necessarily form part of the approved postal address. All information regarding prospective non-residential occupiers represents current intention only and the final identity and/or nature of the occupiers may change. The facilities and services may not be available at the date of completion. Neither the agents nor any person in their employ has any authority to make or give any representation, warranty or guarantee (whether written or oral) in respect of or in relation to the development (or any parts of it). Prospective purchasers should satisfy themselves regarding the accuracy of the information provided in this brochure. No assumption should be made regarding any part or the whole of any plot or the estate not shown in the brochure and we recommend prospective purchasers visit and inspect the development site to understand its relationship to the surrounding area.

Floorplans are intended to give a general indication of the proposed floor layout and refer to approximate measurements only. All stated dimensions are measured from the arrow points. You are strongly advised not to order any carpets, appliances or any other goods which depend on accurate dimensions before carrying out a check measure within your reserved plot following build completion. Final layouts and areas may change before completion. Total apartment area is given in NSA (Net Sales Area) and subject to a tolerance of +/-5%. The provisions of the sale contract as to variations and tolerances shall prevail. January 2020.

